

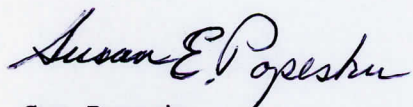


The daily schedule is set up to allow you to participate as much or as little as you wish. The camp atmosphere is friendly and welcoming to those who are new and comfortable for those who are into their own routines. We can enjoy the sun, canoeing, fishing, and take part in the French Conversation sessions for the adults at our leisure. Come prepared to have fun and to relax.

I will be available for any questions you may have about camp anytime except from July 8 - July 18. Please phone me at 785-1989(Artspace) or 785-6214(home after 9 P.M.)

The Gwillam Lake Camp Committee has been working hard to prepare a smooth running camp for '89. We have coordinated with the Central Camps Committee that also oversees Parksville and Kalamalka Camps each summer. We are anxiously waiting for July 29, and we will see you there.

Sincerely,



Sue Popesku

Coordinator Gwillam Lake B.C.

Family French Camp

10003 100 Street

Fort St. John, B.C. V1J 4Y5

785-1989 (w) 785-6214(h)



**GWILLIM LAKE NEWS AND RULES**

**ALL CAMP WEINER ROAST  
TONIGHT!!**

Welcome to the B.C. Family French Camp at Gwillim Lake. Tonight, you will have an opportunity to meet all of the 39 families during the ALL CAMP WEINER ROAST starting at 6:00 PM near the lodge and large firepit. The Camp Committee will supply the ketchup, mustard, relish, marshmallows and wiener sticks. Please do not cut wood within the park area. You supply your own weiners and buns and you may wish to bring vegies. Don't forget to bring a friendly smile and a lawn chair. A special Welcome to the 17 new families. The counsellors camping with us for the first time, will be introduced after supper.

**Daily Routine**

- 9:00 **Announcements**  
All family warm up exercises
- 9:15 Children proceed to groups with Counsellors  
  
Adults proceed to coffee- bring your own mug
- 11:45 Children return to families for lunch  
  
IN THE AFTERNOON
- 1:30 Children return to groups
- 2:00 Adult Conversational French (instructor to be announced)
- 4:00 Children finished for the day.

**Fill Out Forms**

Medical forms must be completed and returned to your child's counsellor by Sunday morning. Please fill out the evaluation form for B.C. Family French Camp by Thursday and return to the Camp Manager.

**Evening Schedule of Events**

- Saturday: All Camp Weiner Roast firepit 6 PM
- Sunday: Campfire and Skits Firepit 7:15 PM
- Monday: Group Desserts and Night Games
- Tuesday: Campfire and Skits (Part 2) firepit 7 PM
- Wednesday: Day off
- Thursday: Volleyball on the beach 6 PM  
Sleep out for the younger children- near firepit
- Friday: All Camp Potluck starts at 5 PM-Lodge firepit  
Campfire for Children's Presentations and skits (final act) plus Adult skit 7 PM
- Saturday: Pancake breakfast \$3 a plate hosted by the Fort St John CPF.

**Important Canoe Workshop**

For all parents who wish to help with canoeing activities, the workshop is mandatory. Even though many of you are expert canoeists, Milou will be giving a variety of instruction in French to the children and requires that the parents be acquainted with his approach. Please be at the docks at 7:45 PM on Sunday. The workshop will take about 1 hour. Everyone is welcome.



# A Message from Camp Coordinator

## Mark Wigglesworth

Welcome campers. Congratulations to all the supporters of the Gwillim Lake Camp as we have the highest number of children ever; 75 for this year's camp. A special welcome to the 17 families who are camping at Gwillim Lake for the first time. B.C. Family French Camp is enjoyed by over 500 children, with an annual budget of \$105,000. Every organization needs new blood and this year we will need a commitment to fill all three of the local camp committee positions. BCFFC is totally run by volunteer parents, so please consider what you might do to continue our success. There will be a parents meeting at 9:30 AM Thursday at the fire pit to discuss the future of B.C. Family French Camp. We need input on the other possible sites for our camp, fundraising to hold the camp fees down, and continued growth of the Northern camp.

## We Need You To Help

Canoeing with the younger children (instruction required Sunday 7:45 PM)  
Cleaning the toilets (equipment supplied).  
Inviting a Counsellor to dinner.  
Relaxing in the sauna.  
Telling us when your child will be absent from activities.  
Knowing about the latest announcements and activities.

PLEASE SIGN UP ON THE MANY NOTICES POSTED ON THE LODGE BULLETIN BOARD.

## Sensible Safety and Sanitation

The School District #59 Educational Camp you are visiting is located in a Provincial Park area. The wildlife in this park includes bears. Use caution when hiking through the bush. Make enough noise so you do not startle a bear.

PLEASE. Do not use the woods for a toilet. Children will be exploring everywhere near the camp and wildlife is attracted to strange smells. Two outhouses are located near the lodge and three are located near the R.V. parking.

PLEASE dispose all garbage bags in the back of the utility trailer near the lodge. Garbage cans are provided in the central areas. Do not burn garbage.

PLEASE do not cut down the trees for firewood or weiner sticks. Firewood is provided in abundance near the lodge. You are welcome to as much as you wish to take. Fires are permitted only in fire pits. Use hibachis for cooking.

Waste water disposal units are provided near the lodge. Soapy water kills flowers and bushes. R.V.s may dump sewage in Tumbler Ridge or Chetwynd only.

Drinking water is available from the lake, stream, or the two wells. One well is by the caretaker's cabin and the other well is by the sauna.

## Special Thanks to:

KOCH Oil  
A & R Ventures  
The Artspace  
Treasure Imports  
School District #59  
School District #60

Modern Languages Service of the Dept of Education  
The many companies in Fort St. John that  
contributed to the Registration bags  
Steel Toes

**Special Thanks to Terry Seguin**

FOR MAKING GWILLIM LAKE B.C. FAMILY FRENCH CAMP A GREAT SUCCESS!



# A Message from Camp Coordinator Mark Wigglesworth

Welcome campers, this is our fourth year of B.C. Family French Camp at Gwillim Lake. It has been a very exciting year for French Camp with expansion at Kalamalka to 3 weeks at our new Vancouver Island location, Miracle Beach. We now have over 500 children in the program and an annual budget of \$100,000. However, we still need your support to help fill Gwillim Lake Camp as we can accommodate 80 children but have only 63 this year. Please help by selling your friends on this great week.

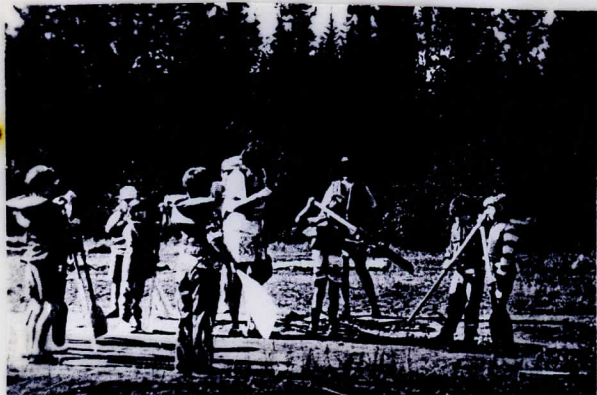
There will be a parents meeting at 9:30 Thursday morning at the fire pit to discuss the success and future of B.C. Family French Camp. We again have been asked to help produce a B.C. French Camp Video. One family will be followed through their week of camp, we ask your assistance and cooperation.

## We Need You To Help

- Canoeing with the youngest children (instruction required Sunday 6-7 PM)
- Cleaning the toilets (equipment supplied)
- Inviting a Counsellor to dinner
- Relaxing in the Sauna
- Telling us when your child will be absent from activities
- Knowing about the latest announcements and activities

Please sign up on the many notices posted on the lodge bulletin board in the exercise area.

## Important Canoe Workshop



For all parents who wish to help with canoeing activities, the workshop is mandatory. Even though many of you are expert canoeists, Milou will be giving a variety of instructions in French to the Children and requires that the parents be acquainted with his approach. Please be at the docks at 6 PM on Sunday. The Workshop will take about 1 hour.



Can you find this family?  
Friday's All Camp Potluck creates an amazing variety of "cooler left-over" dishes. Thanks to Rod and Evan for cooking the meat.

## Wednesday is a Free Day

Chetwynd's new wave pool is available for public swimming from 8 - 9:30 am and 12 - 2:00 PM at a cost of \$1-2. Showers also available.

Tumbler Ridge pool is not available for public swimming as it is under construction.

Enquire at either Tourist Information Centre for directions to pools, laundromats and shopping.

Shikano Mine Tours are available in front of the Tumbler Ridge Information Centre at 12:45 Wednesday.

## MOM'S PROUD MOMENT

Johnny returned home from French Immersion-Grade 3 to find Mom beaming with accomplishment. "Johnny," she said; "I've learned some French. I can say three cats drowned. Just listen," she said. "Un, deux, trois, quatre, cinq!"

## Special Thanks to:

KOCH Oil

A and R Ventures

The Artspace

School District #59

Treasure Imports

Fort St. John Coop

Steel Toes Ent. Ltd.

Dawson Creek Chamber of Commerce

Modern Languages Service Branch of

the Department of Education,

Victoria, B.C.

The many companies in Fort St. John that contributed to the registration bags.

Special thanks to Terry Seguin



# BC Family French Camp Committees

## Gwillim Lake Camp Committee

Camp Manager: Rod Stewart  
Assistant Camp Manager: Evan Johnson  
Registration and Treasurer: Shelly Ostenson  
Camp Coordinator: Mark Wigglesworth

## Central Camps Committee

Provincial Coordinator: Rashid Aziz (Burnaby)  
Provincial Treasurers: Peggy Wilson  
Keith Wilson

## Counsellors

Program Director: Milou  
Head Counsellor: Tetaud

Bebe	Eureka
Clementine	Kafka
Cascade	Lis
Figaro	Buerre de Pinotte
Dimatan	

The counsellors have completed a training course at the beginning of the summer and a further one week of training at Gwillim before the camp began. Naturalist Greg Walters of School District #59 has spent 3 days teaching the safety and unique aspects of Gwillim to the counsellors.

## Sensible Safety and Sanitation

The School District #59 Educational Camp you are visiting is located in a Provincial Park area. The Wildlife in this park includes bears. Use Caution when hiking through the bush. Make enough noise so you do not startle a bear.

**PLEASE** Do not use the woods for a toilet. Children will be exploring everywhere near the camp and wildlife is attracted to strange smells. Two outhouses are located near the lodge and two are located near the R.V. Parking.

**PLEASE** dispose of all garbage bags in the back of the red truck near the lodge. Garbage cans are provided in the central areas. Do not burn garbage.

**PLEASE** do not cut down trees for firewood or weiner sticks. Firewood is provided in abundance near the lodge. You are welcome to as much as you wish to take. Fires are permitted only in fire pits. Use hibachis for cooking.

Waste water disposal units are provided near the lodge. Soapy water kills flowers and bushes. R.V.'s may dump sewage in Tumbler Ridge or Chetwynd only.

Drinking water is available from the lake, stream or the well. The well by the caretaker's cabin is suitable for drinking. Before drinking the water from the well by the sauna, please check with the camp coordinator.



## T-Shirts, Sweatshirts and Caps with Gwillim Lake Design

On Sale at Camp

\$10/\$8 for T-Shirts  
\$20/\$18/\$14 for Sweatshirts  
\$5 for Caps  
Exclusive Design by Judy Arndt

## Things to Know

The Counsellors Lodge is for camp staff and program use. Please do not use this building.

Sauna Cabin "Coyote" is free for use by everyone. The sign up sheet is on the bulleting board. The sauna will be ready for use by 6:30 PM and the schedule has every half hour changes. Please do not leave children unattended.

In Case of Emergency there is a radio phone in the caretaker's cabin. The nearest hospital is in Chetwynd. PLEASE take the time to review the logistics binder by the bulletin board for details on using the phone, fighting fires and emergency numbers. A nurse and first aid personnel are among the campers.

Camp Gate will be closed between 10 PM and 8 AM to assure security.

Additional Life Jackets and Paddles are needed for the program. You may wish to mark your equipment and leave for program use. We appreciate your help.



# BC Family French Camp Committees

## Gwillim Lake Camp Committee

Camp Manager: Rod Stuart  
Asst Camp Manager: Heather Hannaford  
Registrar/Treasurer: Jim and Joy Morrison  
Camp Coordinator: Mark Wigglesworth

### CENTRAL CAMPS COMMITTEE

Prov Coordinator: Margaret Sampson  
Prov Treasurers: Keith and Peggy Wilson

### COUNSELLORS:

Program Director: Milou  
Counsellors: Plume, Pissenlit, Bulle,  
Coco, Geronimo, Lure, Pepin  
Houblon, Bouquet, and Gazou

The counsellors have completed a training course at the beginning of the summer and a further one week of training at Gwillim lake before camp began. Naturalist Greg Walters of School District #59 has spent 3 days teaching the safety and unique aspects of Gwillim to the counsellors.



T-SHIRTS, SWEATSHIRTS & CAPS  
WITH GWILLIM LAKE DESIGN  
ON SALE AT CAMP

DESIGNED BY JUDY ARNDT

\$8/\$10 FOR T-SHIRTS  
\$14/\$18/\$22 FOR SWEATSHIRTS  
\$5/\$7 FOR CAPS

BARGAIN PRICES ON OLD STOCK

## Things to Know

The COUNSELLOR'S LODGE is for camp staff and program use. Please do not use this building.

THE SAUNA CABIN "COYOTE" -the sign up sheet is on the bulletin board starts at 6:30 PM and the schedule has every half hour changes. Please do not leave the children unattended.

IN CASE OF EMERGENCY there is a radio phone in the caretaker's cabin. The nearest hospital is in Chetwynd. Two nurses and first aid personnel are among the campers.

THE CAMP GATE will be closed between 10 PM and 8 AM to assure security.

ADDITIONAL LIFE JACKETS AND PADDLES are needed for the program. You may wish to mark your equipment and leave it for program use. We appreciate your help.

## Wednesday is a Free Day

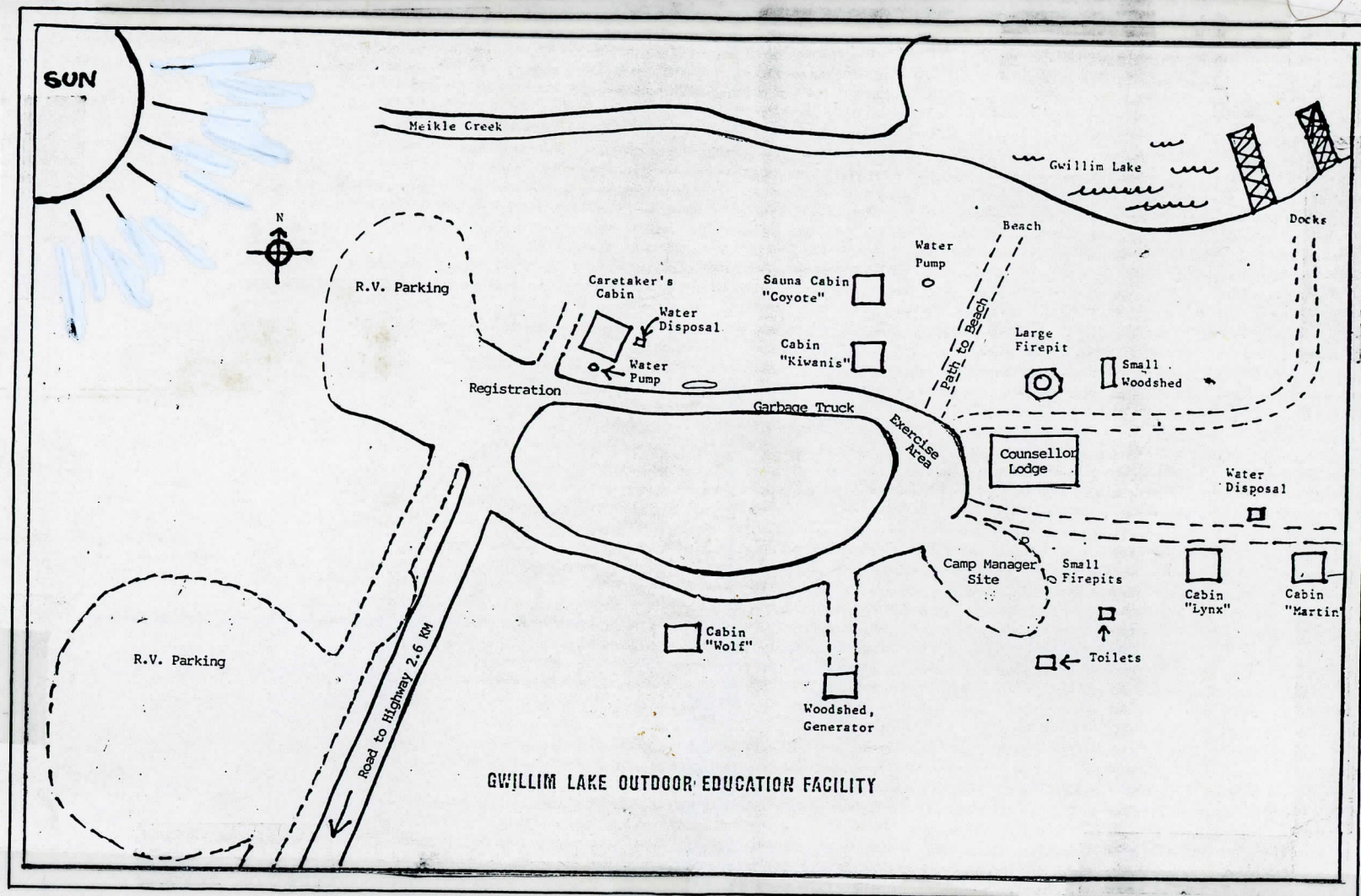
Wednesday is a day to explore the area and neighboring communities featured in the pamphlets provided in your registration kits. Showers and shopping are a highlight of this free day.

In Tumbler Ridge: swimming and showers are available at the Community Centre.

In Chetwynd: Swimming is available in the NEW WAVE POOL, from noon to 5 PM. There is plenty of shopping and laundry mats available.

Don't Miss Out  
**BE ON TIME FOR EVENTS**





## Saturday "Pack It Up" Special

The Fort St John Parents will be sponsoring a pancake breakfast for all the campers. A small charge of \$3/plate will help cover the cost. You will be able to pack up your cooking gear in preparation for returning home and still enjoy a great breakfast.

## Courtesy Notes

Please respect the privacy of the caretaker. This is his home and he assures the security of the site. He is not responsible for the maintenance or cleanliness of the site, buildings or equipment. He is to be consulted only in emergencies. Parents are asked not to visit their children when the groups are in session. The counsellors have a well planned program which is efficiently scheduled for the maximum enjoyment and learning for every age level. Please direct all questions about the program to Milou. The camp Committee is responsible for leaving the grounds and facilities clean when the camp is over. PLEASE help by checking your site for all bits of paper and other garbage. Thank-you.



July 29 to August 5, 1989



## GWILLIM LAKE

WEDNESDAY is a FREE DAY

Wednesday is a day to explore the area and neighbouring communities featured in the pamphlets provided in the registration kit. Showers and shopping are a highlight of this Free Day.

In Tumbler Ridge: Swimming and showers are available at the Community Centre.

The Quintette Coal Mine Tour bus leaves from the Tourist Centre

In Chetwynd: Swimming is not available due to pool closure but there is plenty of shopping available.

### THINGS TO KNOW

Counsellor's Lodge is for camp staff and program use. Please do not use this building.

Sauna Cabin "Coyote" Everyone is free to use the sauna. A sign up sheet is posted on the bulletin board. Please do not leave children unattended.

Outdoor Toilets are available for your use. Please do not use the woods since the children will be exploring everywhere with their groups and wild animals are attracted to strange smells.

Waste Water Disposal can be disposed of in the two pits provided. Soapy water kills the flowers and bushes. RV's may dump sewage in Tumbler Ridge or Chetwynd only.

Drinking Water is available from the lake, stream, or well. The well behind the caretaker's cabin is suitable for drinking. The well by the sauna is only for washing.

In Case of Emergency there is a radio phone in the caretaker's cabin. The nearest hospital is Chetwynd. PLEASE take the time to review the LOGISTICS binder by the bulletin board for full details on using phone, fighting fires and emergency numbers.

Camp Gate will be locked between 10 P.M. and 8 A.M. to assure security.

### DAILY ROUTINE

8:45 A.M. All family warm-up exercises.

9:00 A.M. Announcements

Children proceed to groups with counsellors

Adults proceed to coffee-bring your own mug

11:45 A.M. Children return to families for lunch.

1:45 P.M. Children return to groups.

2:00 P.M. Conversational French Class offered

4:30 P.M. Children finished for day.

Evenings: A variety of activities and bonfires are planned throughout the week.

Bulletin Board in the Exercise Area is for:

Signing up for volunteering with canoeing and cleaning the toilets.

Signing up for Sauna times.

Signing out-in case of emergency you must be located or a child will be absent.

The latest information and activities announcements.

### Saturday "Pack-It-Up" Event

A Pancake Breakfast will be sponsored by the Dawson Creek B.C. Parents for French. A minimal charge will cover costs and will be announced later in the week. You will be able to pack up your cooking items in preparation of returning home and still enjoy a great breakfast.

### COURTESY NOTES

Please respect the privacy of the caretaker. This is his home and he assures the security of the camp when it is not in use. He is not responsible for the maintenance or cleanliness of the site, buildings or equipment. He is to be consulted only in emergencies.

Parents are asked not to visit their children when the groups are in session. The counsellors have a well-planned program which is efficiently scheduled for the maximum enjoyment and learning for each age level. Please direct all questions about the program to Barb Dales, the Camp Program Director.

The Camp Committee is responsible for leaving the ground and facilities clean when camp is over. PLEASE help by checking your site for all bits of paper and other garbage. Thank you.....



July 29 to August 5, 1989

BC Family French Camp

## GWILLIM LAKE NEWS AND RULES

# ALL CAMP WIENER ROAST TONIGHT!!

Welcome to B.C. Family French Camp at Gwillim Lake. Tonight, you will have the opportunity to meet all of the 42 families in the camp this year during the ALL CAMP WIENER ROAST starting at 6 P.M. near the lodge and large firepit.

The Camp Committee will supply the ketchup, mustard, relish, marshmallows and wiener sticks.

Please do not cut wood within the park area. You supply your own weiners and buns and you may wish to bring veggies. Do not forget to bring a friendly smile.

The ALL CAMP WIENER ROAST is the first time all the campers and counsellors will have a chance to meet. Wear your buttons and bring a lawn chair. SEE YOU THERE.

### Daily Routine

- IN THE MORNING
- 8:45 All Family Warm-up Exercises (at the lodge)
- 9:00 Announcements  
Children proceed to groups with counsellors.  
Adults proceed to coffee - bring your own mug.
- 11:45 Children return to families for lunch
- IN THE AFTERNOON
- 1:45 Children return to groups
- 2:00 Adult Conversational French Class offered by Jim Drury (instructor at Parksville and Gwillim previously)
- 4:30 Children finished for the day

### Evening Schedule of Events

- Saturday : All Camp Wiener Roast Lodge Firepit 6 P.M.
- Sunday : Campfire with Mystery Play Lodge Firepit 7 P.M.
- Monday : Wood Games on the Beach 7 - 8 P.M.
- Tuesday : Campfire with Mystery Play(part 2) 7 P.M.
- Wednesday: Day Off
- Thursday : Volleyball on the beach 6:30 P.M.  
Sleep-Out for older children - near fire pit
- Friday : Campfire with Children's Presentations and Mystery Play(final act) plus Adult Skit 7 P.M.
- Saturday : All Camp Potluck starts at 5:30 - lodge firepit  
Pancake Breakfast -\$3 a plate hosted by Dawson Creek CPF

### Important Canoe Workshop

For all parents who wish to help with canoeing activities, the workshop is mandatory. Even though many of you are expert canoeists, Milou will be giving a variety of instructions in French to the children and requires that the parents are acquainted with his approach. Please be at the docks at 6 P.M. on Sunday. The workshop will take about one hour. Everyone is welcome.

**DON'T MISS OUT  
BE ON TIME FOR EVENTS**



# B.C. Family French Camp Committees

## Gwillim Lake Camp Committee

Camp Manager: Terry Seguin  
Assistant Camp Manager: Rick Beerling  
Registration and Treasurer: Judy Arndt  
Camp Coordinator: Sue Popesku

## Central Camps Committee

Provincial Coordinator: Rashid Aziz (Burnaby)  
Provincial Treasurers: Peggy and Keith Wilson (Victoria)  
Provincial Purchaser: Sandy Fugger (Kelowna)

## Counsellors

Program Director: Milou

Cascade Brindille  
Caillou Libellule  
Tetard Clementine  
Bebe Confiture  
Tofu Coquine  
Junior Counsellor: David

The Counsellors have completed training course at the beginning of summer and a further one week training at Gwillim Lake before Camp began. Naturalist Greg Walters of the School District #59 has spent 3 days teaching the safety and unique aspects of Gwillim to the counsellors.



B.C. FAMILY FRENCH CAMP

## SWEATSHIRTS and CAPS with Gwillim Lake Design

ON SALE AT CAMP

**\$18 / \$14 / \$12 for sweatshirts  
\$5 for caps**

**Exclusive design by Judy Arndt**

## Sensible Safety and Sanitation

Medical forms must be completed and returned to the camp coordinator in the "Kiwaniis Cabin" by Sunday afternoon. Please fill out the two evaluation forms (one for the SD #59 and the other for B.C. Family French Camp) by Friday and return to the camp coordinator.

The School District #59 Educational Camp you are visiting is located in a Provincial Park area. The wildlife in this park includes bears. Use caution when hiking through the bush. Make noise enough so you do not startle a bear.

**PLEASE** do not use the woods for a toilet. Children will be exploring everywhere near the camp and wildlife is attracted to strange smells. Two outhouses are located near the lodge and two are located near the R.V. Parking.

**PLEASE** dispose of all garbage bags in the back of the blue truck near the Lodge. Garbage cans are provided in central areas. Do not Burn garbage.

**PLEASE** do not cut trees for firewood or weiner sticks. Firewood is provided in abundance near the lodge. You are welcome to as much as you wish to take.

Fires are permitted only in fire pits. Use hibachis for cooking.

Waste Water Disposal units are provided near the lodge. Soapy water kills the flowers and bushes. R.V.'s may dump sewage in Tumbler Ridge or Chetwynd only.

Drinking water is available from the lake; stream; or well. The well by the caretaker's cabin is suitable for drinking. Before drinking the water of the well by the sauna; please check with camp coordinator.

## Things to Know

The Counsellor's Lodge is for camp staff and program use. Please do not use this building.

Sauna Cabin "Coyote" is free for use by everyone. The sign up sheet is on the bulletin board. The sauna will be ready for use by 4:30 P.M. and the schedule has every half hour changes. Please do not leave children unattended.

In Case of Emergency there is a radio phone in the caretaker's cabin. The nearest hospital is Chetwynd. PLEASE take the time to review the Logistics binder by the bulletin board for details on using phone; fighting fires; emergency evacuation in case of sour gas; and emergency numbers. A nurse and first aid personnel are among the campers.

Camp Gate will be closed between 10 P.M. and 8 A.M. to assure security.

Additional Life Jackets and Paddles are needed for the program. You may wish to mark your equipment and leave it for program use. We appreciate your help.





# Central Coordinator to Attend All Camp Meeting

All adult campers are requested to attend the all camp meeting on Thursday morning at the large firepit at 9:30 A.M. Rashid Aziz, Central Camps Coordinator is coming from Burnaby to make a special presentation about the future of B.C. Family French Camps.

Gwillim Lake is one of three B.C. Family French Camps which are becoming more popular each year. The Parksville and Kalamalka Camps were overbooked this year and plans must be taken to accommodate the increasing demand for space at camp.

Agenda items for the All Camp Meeting will include short term and long term measures to meet the demand for more space at existing camps and to expand B.C. Family French Camps to other locations. Other agenda issues are the registration process, tax deduction issue and local camp matters such as the hosts for the Gwillim Lake Camp for 1990 and site use. A need for a pre-late Core Group is required for the Gwillim Lake Camp.

Join the All Camp Meeting and be part of what's happening.

## Win a Family Holiday at B.C. Family French Camp

**Only \$3**

Raffle Tickets available from Camp  
Coordinator

Draw August 25, 1989

## Wednesday is a Free Day

Wednesday is a day to explore the area and neighboring communities featured in the pamphlets provided in your registration kits. Showers and shopping are a highlight of this Free Day.

In Tumbler Ridge: Swimming and showers are available at the Community Centre. Public Swim is usually from 1-3 P.M. and admission is \$1 to \$1.50 approximately. Access to the showers is available without paying to go swimming.

The Quintette Coal Mine Tour bus leaves from the Tourist Centre at 10:30 A.M. returning at 1:30 P.M.. Please sign up in advance at the Bulletin Board to assure space in the bus. Child \$1/Adult \$2.

In Chetwynd: Swimming is not available due to pool closure but there is plenty of shopping available.



Friday's All Camp Potluck creates an amazing variety of "cooler left over" dishes. Judy Arndt carved the donated meat at the '88 Potluck.

## We Need You To Help

- Canoeing with the youngest children (instruction required Sunday 6-7 P.M.)
- Cleaning the toilets (equipment supplied)
- Inviting a counsellor to dinner.
- Relaxing in the sauna.
- Telling us when your child will be absent from activities.
- Knowing about the latest announcements and activities

Please sign up on the many notices posted on the lodge bulletin board in the exercise area.

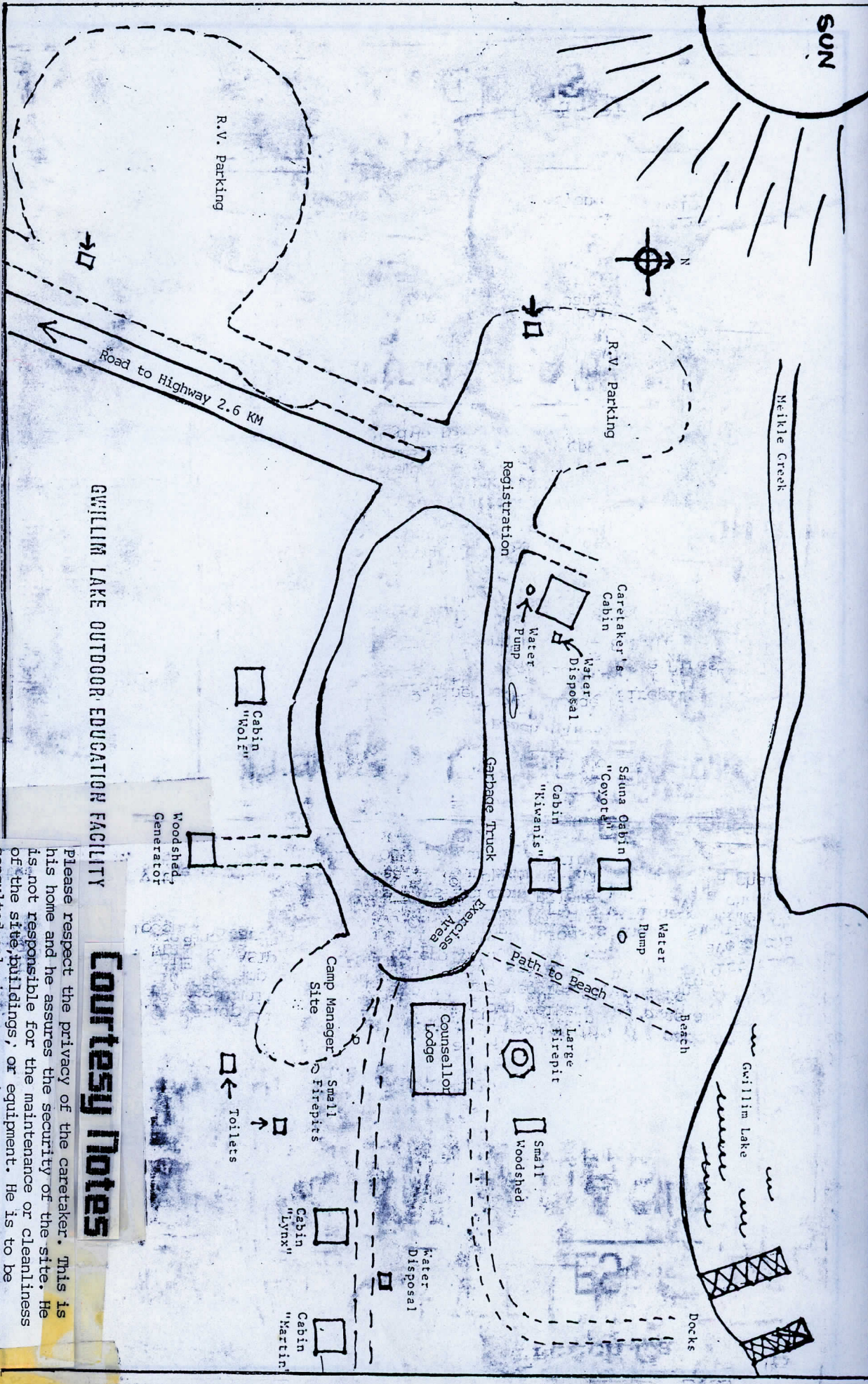
## Special Thanks to:

- |   |   |
|---|---|
| <ul style="list-style-type: none"> <li>Koch Oil</li> <li>A and R Ventures</li> <li>The Artspace</li> <li>Land Transport</li> <li>School District #59</li> <li>Treasure Imports</li> <li>Modern Languages Service Branch of the Department of Education, Victoria, B.C.</li> </ul> | <p>The many companies in Fort St. John that contributed to the registration bags.</p> |
|---|---|

for making Gwillim Lake B.C. Family French Camp a great success.



SUN



# Saturday "Pack It Up" Special

The Dawson Creek Canadian Parents for French will be sponsoring a pancake breakfast for all campers. A small charge of \$3 per plate will help to cover the cost. You will be able to pack up your cooking gear in preparation for returning home and still enjoy a great breakfast.

## GWILLIM LAKE OUTDOOR EDUCATION FACILITY

### Courtesy Notes

Please respect the privacy of the caretaker. This is his home and he assures the security of the site. He is not responsible for the maintenance or cleanliness of the site, buildings, or equipment. He is to be consulted only in emergencies.

Parents are asked not to visit their children when the groups are in session. The counsellors have a well-planned program which is efficiently scheduled for the maximum enjoyment and learning for each age level. Please direct all questions about the program to Milou.

The Camp Committee is responsible for leaving the grounds and facilities clean when camp is over. PLEASE help by checking your site for all bits of paper and other garbage. Thank you.....



B.C. FAMILY FRENCH

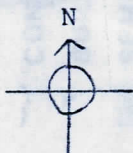
CAMP



GWILLIM LAKE



Meikle Creek



R.V. Parking

Caretaker's Cabin

Water Disp

Water Pump

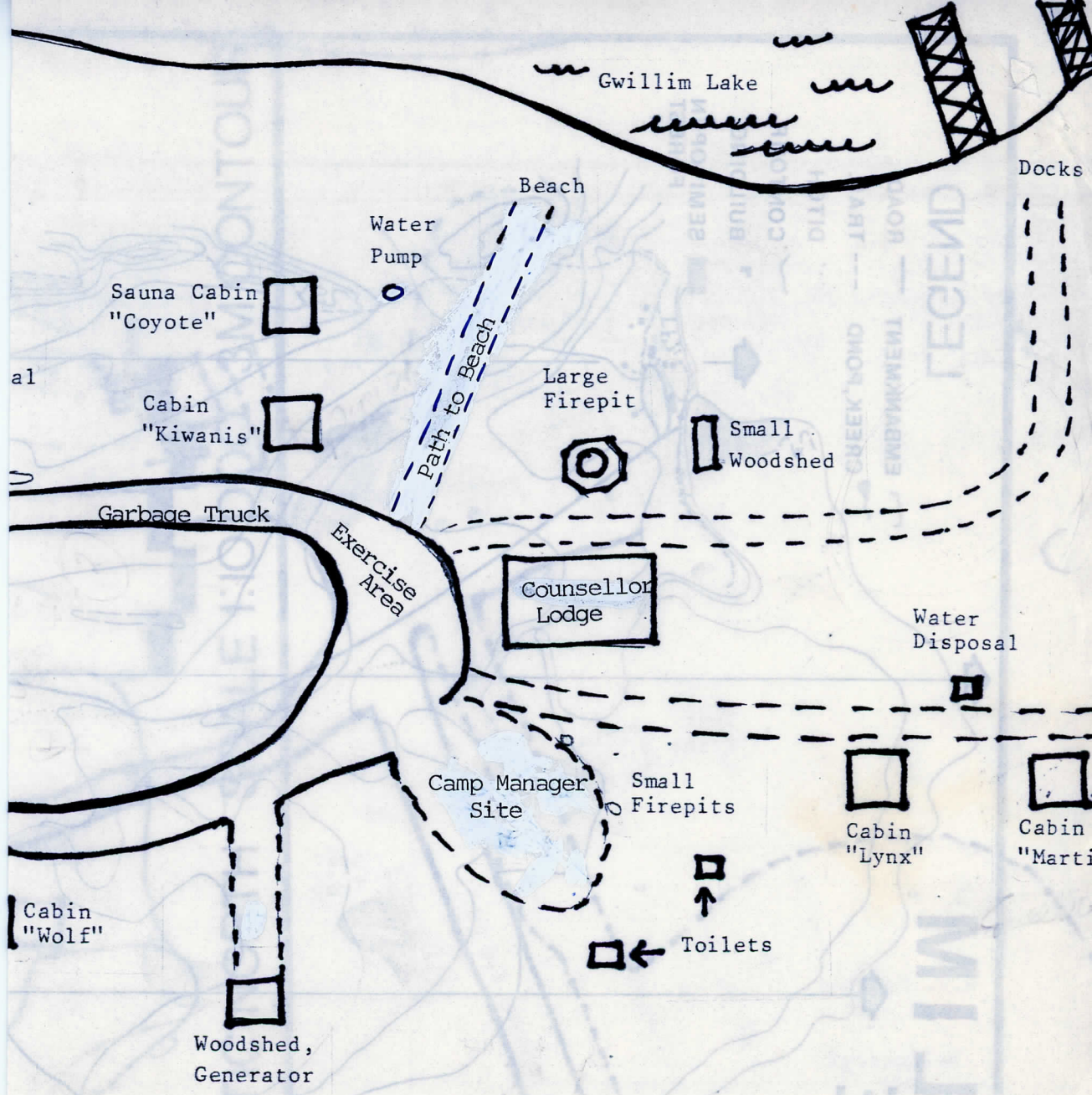
Registration

R.V. Parking

Road to Highway 2.6 KM

GWILLIM LAKE OUTDO





**EDUCATION FACILITY**





January 20, 1989

Mr. Michael Phelps  
President and Chief Executive Officer  
1333 West Georgia Street  
Vancouver, B.C. V6E 2E6

Dear Mr. Phelps;

The Northern Camp Gwillam Lake is one of three B.C. Family French Camps that offers the opportunity for children of French Immersion to express themselves in French outside of the classroom situation in an educational atmosphere.

The Northern Camp draws from a sparse but growing population of French Immersion students in a relatively new French Immersion program in Northern British Columbia. The remote location of Gwillam Lake near Tumbler Ridge adds to the cost of operation of the camp.

The camp was initiated two years ago and has been subsidized by the B.C. Central Camps Committee which also organizes camps at Kalamalka and Parksville. Although the Central Camps Committee sees the potential of the Gwillam Lake development for future cost recovery, it is unable to subsidize the program at Gwillam Lake in 1989.

The Northern Camp Gwillam Lake Committee would like to request a corporate sponsorship from Westcoast Energy to allow the Northern Camp to continue. A sponsorship of \$2,000 would assure the continuation and development of the Northern Camp. Westcoast Energy would receive high profile in all Northern Camp literature; exposure in the Canadian Parents for French newsletter; Northern newspaper and radio announcements and a tax-deductible receipt.

The Northern Camp Committee believes that the children of Northern B.C. should have the opportunity to attend B.C. Family French Camp as do the children in other parts of B.C. The Committee is working toward total cost recovery in a few more years when the French Immersion program in the surrounding school districts is better established and the Northern Camp opportunities become more widely known.

We look forward to discussing possible corporate sponsorship by Westcoast Energy for the Northern B.C. Family French Camp at Gwillam Lake.

Sincerely;

*Susan E Popesku*

Sue Popesku

Resource Development Officer

10003 100 Street; Fort St. John; B.C. 785-1989



Northern Camp-Gwillam Lake  
B.C. Family French Camp

### Objectives

To provide the opportunity for children of French Immersion classes and potential French students to express themselves in French outside of the classroom situation in a casual educational atmosphere.

To foster French language interaction among family members in a practical life setting.

To reinforce the practical use of the French language during the summer.

### Program

Gwillam Lake Northern Camp offers a unique wilderness experience including canoeing, outdoor survival, orienteering, and the study of plants and animals in their natural settings. The daily educational program is designed by French educators and structured to take maximum advantage of group needs and environmental opportunities.

French speaking counsellors are highly qualified instructors for the camp setting. Six counsellors travel to the Northern Camp between the scheduled dates of the other two B.C. Family French Camps in Kalamalka and Parksville. The counsellors are under the direction of the Program Director and are assisted by junior counsellors-in-training.

The daily program allows six hours of instruction in designated age groups where the counsellor/students ratio is one to ten. A variety of skills are taught in hiking, survival, camping, cooking and sports. All French is spoken during instruction and students are exposed to many French words and phrases that do not appear in the classroom situation.



### Northern Camp, Kalamalka, Parksville

The Northern Camp Gwillam Lake is one of the three Family French Camps in British Columbia. The B.C. Family French Camp program is a pioneer in family French Immersion camping experience. Kalamalka in the Okanagan has been established for five years. Parksville on Vancouver Island and Gwillam Lake in the North were initiated two years ago. Both Kalamalka and Parksville enjoy capacity enrollment due to the heavily populated area and the large number of students in French Immersion.

The Northern Camp has a newer French Immersion School District program and the numbers of students in French Immersion is small but growing. The population base from which to draw potential campers is smaller than that of the other two camps. The remote location contributes to the unique opportunities provided by the Northern Camp; however the costs of operation of the Northern Camp are greater than those in the South.

The Northern Camp provides easier access to the people of Fort St. John, Prince George, Dawson Creek, Chetwynd, Tumbler Ridge, and MacLEaod Lake, as well as families from Northwestern Alberta and Kamloops.

### Need for Assistance

The Northern Camp costs more to operate due to the following reasons:

1. The camp is in its formative stages.
2. The growing numbers of French Immersion students is not great enough to draw a full enrollment in Northern Camp Gwillam Lake.
3. The remote location restricts transportation of some equipment used in the other camps.
4. The Central Camp Committee will no longer subsidize the Northern Camp.

The Northern Camp Committee believes the student base in French Immersion and the growing interest in B.C. Family French Camp will eventually be enough to sustain the Northern Camp in a few more years. In the meantime, assistance is required to maintain the Northern Camp Gwillam Lake.



B.C. FAMILY FRENCH CAMP -- AGM -- OCT. 29-30, 1988

Present: Barb Dales, Past Camp Coordinator & Program Director  
Gerry Petretta, Past Treasurer, Central Committee  
Keith & Peggy Wilson, Treasurers, Central Committee  
Sandy Fugger, Purchaser, Central Committee  
Marcy Smith, Registrar, Kalamalka  
Anne Heggs, Registrar, Parksville  
Joan Sicotte, Camp Rep., Gwillim Lake  
Sue Popesku, Funding Committee, Gwillim Lake

- Barb called the meeting to order at 9:30 on Sat. Oct. 29.
- gave brief introductions--Central Camps Committee consists of 6 voting members: Coordinator, Treasurer, Purchaser plus the 3 camp reps (Kalamalka, Gwillim, Parksville).
  - resignations re Barb's and Gerry's positions--time for "new blood". Barb and Gerry will no longer be involved in decision-making yet are available for volunteer work in assisting the "rookies".
  - honorariums discussed--Barb had been receiving a \$1000.00 per program-week honorarium as Program Director as well as the "site plus 2 kids' program fees" honorarium. Central Treasurer received a \$1000.00 honorarium plus a site and two kids' program fees at any one of the three camp locations. The Central Purchaser receives a site plus 2 kids' program fees at any one of the three camp locations. The local camp committee members also receive an Honorarium. The Camp Manager receives 2 sites and 2 kids' program fees at his/her local site, the Treasurer and the Registrar each receive 1 site plus 2 kids' program fees at their local site.
  - brief history of camp--camp now going into 6th year
    - idea of camp originated with the North Vancouver Parents for French group and got off the ground under the direction and hard work of Jean Swindells of Kelowna. Since that first operation some 6 years ago, a one week camp at Kalamalka, BCFFC has grown to an operation whereby 5 one-week-long sessions of camp are offered in 3 different locations throughout the province.
  - philosophy reviewed--involve as many campers as possible by keeping camp costs down.

1. Non-Profit Society... Society's Act

-discussion on possibility of B.C.F.F.C. becoming a Non-Profit Society for reasons of liability and donations (charity #, tax receipts)

PEGGY MOVED THAT BCFFC BECOME A REGISTERED NON-PROFIT SOCIETY UNDER THE B.C. SOCIETIES ACT. SECONDED BY GERRY. PASSED.

Gerry, Peggy and Keith will research the Societies Act. If Members-at-Large are needed, Sue and Barb volunteer for these positions.



-copies of our present insurance policies re liability and the equipment will be sent to all site reps.

## 2. Job Descriptions

-review of responsibilities of each camp position.  
-each area discussed and revised descriptions are attached to these minutes

-areas revised: Central Treasurer, Local Treasurer, Local Camp Committee, Local Registrar, Central Purchasing Agent, Local Camp Coordinator, Camp Manager, Central Camp Coordinator, Program Director

- A. Hiring in the Spring--Central Coordinator's job  
--French fluency is a benefit for this responsibility, but not a necessity, as this job can always be delegated out.

NB. BARB DALES HAS VOLUNTEERED TO HIRE OR TO HELP WITH THE HIRING OF THE 1989 PROGRAM DIRECTOR, COUNSELLORS, AND JUNIOR COUNSELLORS. (approx 50 hours)

Barb,s impressions of next year's program director: at worst, a P.E./Rec. University student who "speaks" French, or at best, an Immersion Teacher with a strong interest in Outdoor Education

BARB MOVED THAT WE HIRE NICKI ABRIOUX AS A COUNSELLOR-IN-TRAINING FOR 8 WEEKS IN 1989 AT 1/2 THE REGULAR COUNSELLOR'S WAGES, ON THE CONDITION THAT SHE HAS A LEGAL GUARDIAN PRESENT AT EACH SITE. ANY OTHER CONDITIONS WOULD BE SET FORTH IN PRINT. SECONDED BY PEGGY. PASSED

- C. Training Week Proposal--Barb proposes to come to Kalamalka and start the program by "doing" the training week; i.e., train the program director and counsellors. She would be under contract including wages of \$1000.00 for that week of canoeing, orienteering, cooperative games, and scheduling.

MARCY MOVED THAT THE ABOVE TRAINING WEEK PROPOSAL BE ADOPTED  
JOAN SECONDED THE MOTION. PASSED

- D. T-Shirts--new colours and larger sizes suggested  
Sandy will receive information on t-shirts from Mike & Judy Arndt via Joan.

3. Registration --Barb volunteered to mail out the forms which will be revised to include the following:

1. add NSF cheque fee of \$20.00
2. revise camp information sheet
3. CPF membership form at bottom



4. include more specific details re borrowing of canoes, paddles and life jackets.
5. names of children attending camp who are not registered in the program.

4. Coquitlam Parents for French--has an idea for a "Camp Lottery" to be used as a chapter fund raiser. This idea will be limited to Coq. P.F. (Barb's chapter) to be done on a trial basis--draw date on March 1st. This Camp Lotto idea will be reviewed after the summer of '89 at the next AGM. Barb asked each local to reserve a campsite for 1 family for each week of camp until the draw is made and the winner chooses a site-week. PEGGY AND ANNE ARE AGAINST THIS PROPOSAL DUE TO THE TIMING OF THE DRAW DATE.

5. Northern Camp--Gwillim Lake--a very "iffy" situation with the very real possibility of not breaking even. Barb stated that the North have a very strong group of supporters who are struggling to increase registrations for 1989. Joan and Sue presented a "case for the North" including a slide presentation, petitions showing interest for camp '89, registrations already received and 20 FTE spots reserved. Possibilities of helping the North: fund raising at the local level, at the Provincial level in that each chapter would help fund-raise, publicize the camp more so that all of the Northern chapters were aware of the site. In reality, Gwillim needs 60 Full-time kid campers to make the camp a go (compared to 43 FTE's in '88) Gwillim must apply for the Modern Languages Grant for Remote Areas through their School District French Coordinator. Seeking corporate funding is a possibility (West Coast Transmission). This camp was short \$3600.00 in their 1988 budget. A major problem will arise if they do not receive the Remote Grant in 1989.

A brainstorming session--how to increase revenues

1. increasing site fee to \$100
2. lottery--fishing trip?? contact B.C. Outdoors Magazine
3. celebrity dinners and/or roasts
4. increasing program fee from \$80 to \$90
5. offering babysitting services at camp
6. regional-grant-in-aid

If the 1989 camp were to go as the 1988 camp did there is a very real possibility of a shortfall of \$4300.00.

Joan strongly recommends that a letter go out to all potential campers now and again in January and in February telling of the urgency to register for camp. A phoning campaign was also suggested.

KEITH PROPOSES THAT GWILLIM IS A "GO". IF GWILLIM CAMP COMMITTEE CANNOT SUPPORT MORE THAN 6 COUNSELLORS BY FEB. 1, THEN THE CENTRAL CAMP COMMITTEE WILL BE RESPONSIBLE FOR CONTRACTING OUT THE 4 COUNSELLORS. SECONDED BY ANNE.



PASSED (Sandy objected)

For more information on the Gwillim Camp, contact  
JOAN SICOTTE  
~~5503-87 A AVENUE~~ 10030-103 Ave.  
FT. ST. JOHN, B.C.  
V1J 2H5  
785-2360

6. Creative Funding--could each host camp try to create a fund-raising activity for the central camps fund? Organized by the campers? eg. Bingo, Fun-Fairs? This idea was tossed about at great length and it was finally decided to "put the ball in the campers' court" by including in a newsletter to go out with the registration form, a STRONG plea to the campers regarding the very real possibility of fees going up to cover the higher expenses and the possibility of not receiving any Grant monies in the future. Give campers the choice of an increase in fees or organizing a fund-raising activity. Perhaps get involved in some sort of corporate sponsorship. Keith will contact Mr. Tom Grieve, 33591 First Avenue, Mission B.C., V2V 1H3, 820-0654, from Kalamalka Camp week 1 to help us with seeking corporate sponsorship. Tom had already discussed this matter with Barb last summer.

7. Publicity--Barb will no longer be doing the publicity. The next Provincial Newsletter submission will be done by Anne. The National Newsletter submission will be due before June 30 to be printed in Sept. 89.

A SPECIAL PROJECT--new flyer mailout is a possibility  
--Diane and George Brown, 3824 Ulster St.  
Pt. Coquitlam, V3B 3L5, 941-4706 have  
volunteered to set up a flyer mailout but  
they need volunteers to acquire the names  
and addresses of all the Immersion  
families in B.C.  
--The recent CPF Special Report (Sept. '88)  
could be used as a handout.

Evaluation forms were perused and a list of volunteer names was made. Sandy will try to locate from this list a volunteer or two to head up this SPECIAL PROJECT.

8. Coordinator Recruiting--Barb helped to create a job description for the Central Camp Coordinator. A list of approachable candidates was drawn up. These included

1. Annabel Bradshaw--Vancouver
2. Heather Stefanik--Coquitlam
3. Rashid Aziz--Vancouver
4. Sharon Clayton--Delta

Sandy and Keith will approach these people by phone during the next week in order to fill the void.

Requirements for this position include the mailing of registration forms for the upcoming camp, hiring the Program



Director and Counsellors, attending the AGM in May '89 in Victoria, attending the Info-Exchange in mid-September '89 on the coast, and of course the phoning and written work that is outlined in the enclosed Job Description. For the 1989 camp year Barb has offered to ease the transition to a new Coordinator by helping with the hiring and doing the registration forms.

9. Budget--discussions of some of the fee "problems" resulting from the 1988 camps. The former policy states that no refund will be offered unless the camp is 100% full and your program spot can be filled. Then the total refund less \$20.00 is given. Should we change this policy? There are 3 incidences that arose this year that we reviewed since no refund has ever before had to be issued. After discussing at great length these particular cases, we decided to stick to policy at this time. Gerry and Peggy will inform the campers involved this year that they will receive only a refund in site fee and t-shirt fee. An exception to this will be in the case of Barb Etter of the Kalamalka camp, who, after having put a stop-payment on her 2nd cheque, will receive no refund at all. The clause on the registration form regarding refunds will be updated to restate the policy more clearly.

Gerry's report on Revenues and Expenses 1988 was given and reviewed. A new budget for 1989 was suggested--to be finalized by Keith and Peggy Wilson. Several new expenses to consider this upcoming year are Barb's fee for the training week at Kalamalka, travelling expenses for the Program Director and Counsellors if they are without vehicles, and increased site fees.

A Wish List was suggested--Purchase of tent (researched by Barb) or tent rental, approx \$300  
--parachute purchase, approx. \$250  
--Walkie-Talkies of up to a range of 5 km. Barb will research price.

Projected Revenues and Expenses were suggested and will be tabulated in detail by Keith. See attached information

Meeting was adjourned officially at 5:30 on Sept. 30th.

And the work sessions began--Registration form was revised

- Newsletter to campers was started and a meeting date to complete this project was set up for Nov. 8
- Job descriptions were rewritten, see attached.
- financial report (attached)
- letter written by Gerry to Geoff Mills, Modern Languages Branch, regarding monies granted to BCFFC for 1988 camps