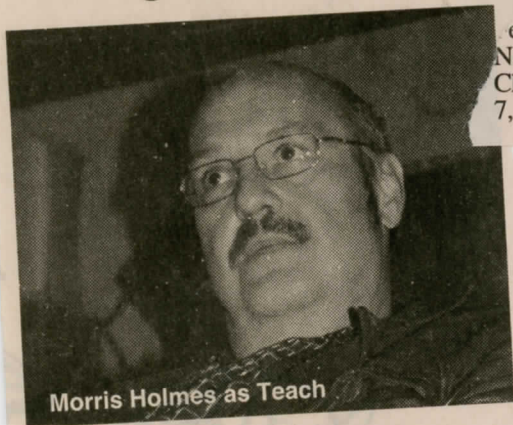


# REGION

## Stage North looks to build on Mainstage success



Morris Holmes as Teach

• CONTINUED FROM A1

The Tuna plays are traditionally performed by two men who must play the entire cast of over 20 characters of both genders and various ages.

Bridge to Broadway had previously performed the first of the Tuna plays, Greater Tuna, in 2002, and decided to do A Tuna Christmas to continue the challenge.

Bridge to Broadway began in 2000 when founding member Tom Kirschner decided he wanted to test his acting skills and try more challenging plays.

"We wanted to do a production that had something that would challenge us, so that's what Bridge to Broadway started to become. We wanted to do something new and try things that were out of the safe zone," said Kirschner, actor and co-director for the play.

The challenge is definitely there with A Tuna Christmas, where Kirschner and Slazai sometimes have to play several characters just for one scene.

A Tuna Christmas runs at the Lido Theatre May 2 and 3, and American Buffalo runs May 1-3 at the North Peace Cultural Centre.

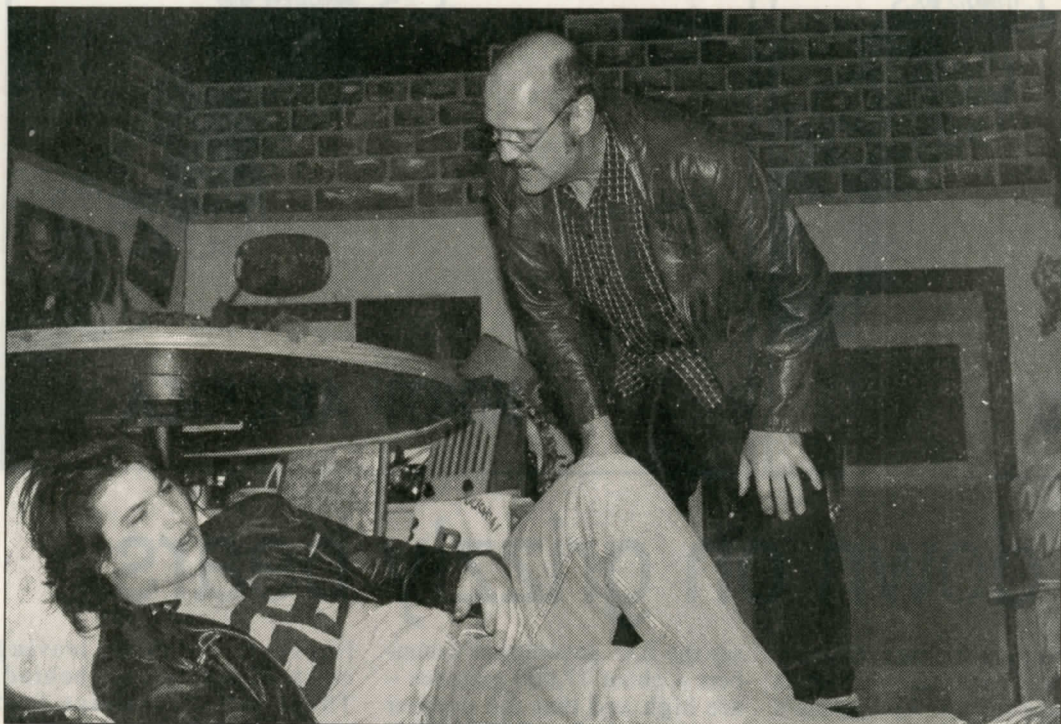
The line-up for the Peace River Zone Festival this year includes: Dracula from the North Peace Players on May 6, A Tuna Christmas from Bridge to Broadway on May 7, American Buffalo from Stage North Theatre

Society on May 8 and Legoland from Stage North Theatre Society on May 9.

The winner of the Peace River Zone Theatre Festival will travel on to Mainstage 2008 in Nanaimo in July. (Aleisha Hendry photo)

MAY 1, 2008

DJP



Aleisha Hendry/AHN

## BUFFALO BEGINS

MAY 2008

DUP

Morris Holmes gives Kris Przednowek a piece of his mind during a special preview performance Wednesday night of the Stage North production of *American Buffalo*, which runs from May 1-3 at the North Peace Cultural Centre.