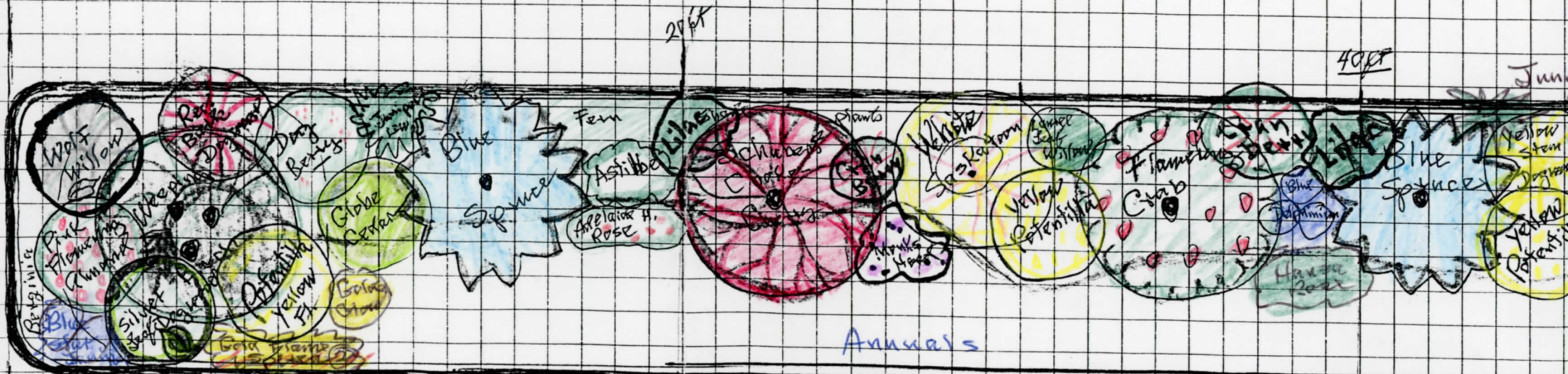


Planters at the Artspace

Shrubs:

Suggested Landscaping by Ellen Fox (Growth Size about 10 years
Year 2000)

- Trees:
- 2 Weeping Birch or Paper Birch
 - 3 Blue Spruce
 - 3 Red leaved Trees (Schubert Chokecherry, Flowering Plum,
 - 1 Flowering Crab apple
 - 1 Bass Tree
 - 1 May day Tree
 - 1 Mountain Ash (at lamp)



Blue Star
Juniper
Weeping
Paper
Birch

A

Blue Spruce

20ft
Schubert
Chokecherry

B

Flowering
Crabapple

40ft
Blue
Spruce

- 1 Wolf Willow (clump) (wild)
- 1 Dog Berry (wild)
- 8 'Blue Star' Junipers
- 2 Silver leaf Dogwood
- 5 Green Junipers (low)
- 2 Pink Flowering Almonds
- 5 yellow & white Potentilla clumps
- 2 Globe cress
- 2 Astilbe
- 3 Laurel leaf Willow
- 4 White Saskatoon, green leaves, Brilliant yellow in fall
- 4 Hybrid lilacs
- 4 Crab betty (wild) clumps
- 1 Golden Elder
- 1 Yellow Stem Dogwood
- 4 Gold Flame Spirea
- 1 Red Stem Dogwood

- Perennials
- Roxo = Adelais's Hostas 2
 - Shrub 1
 - Yellow Periwinkle 1
 - Tenara Bugles 1
 - Hansa 1
 - Golden Glow 3
 - Ferns (Native) 6
 - Delphiniums
 - Shades of Blue, Lav, White, 9
 - Monks Hood - dark purple 14

- Vines - Clematis - Spaced
- Purple 4
 - Blue 4
 - White 4
 - Pinks 4
- } 16

