

FORT ST. JOHN COMMUNITY ARTS CENTRE

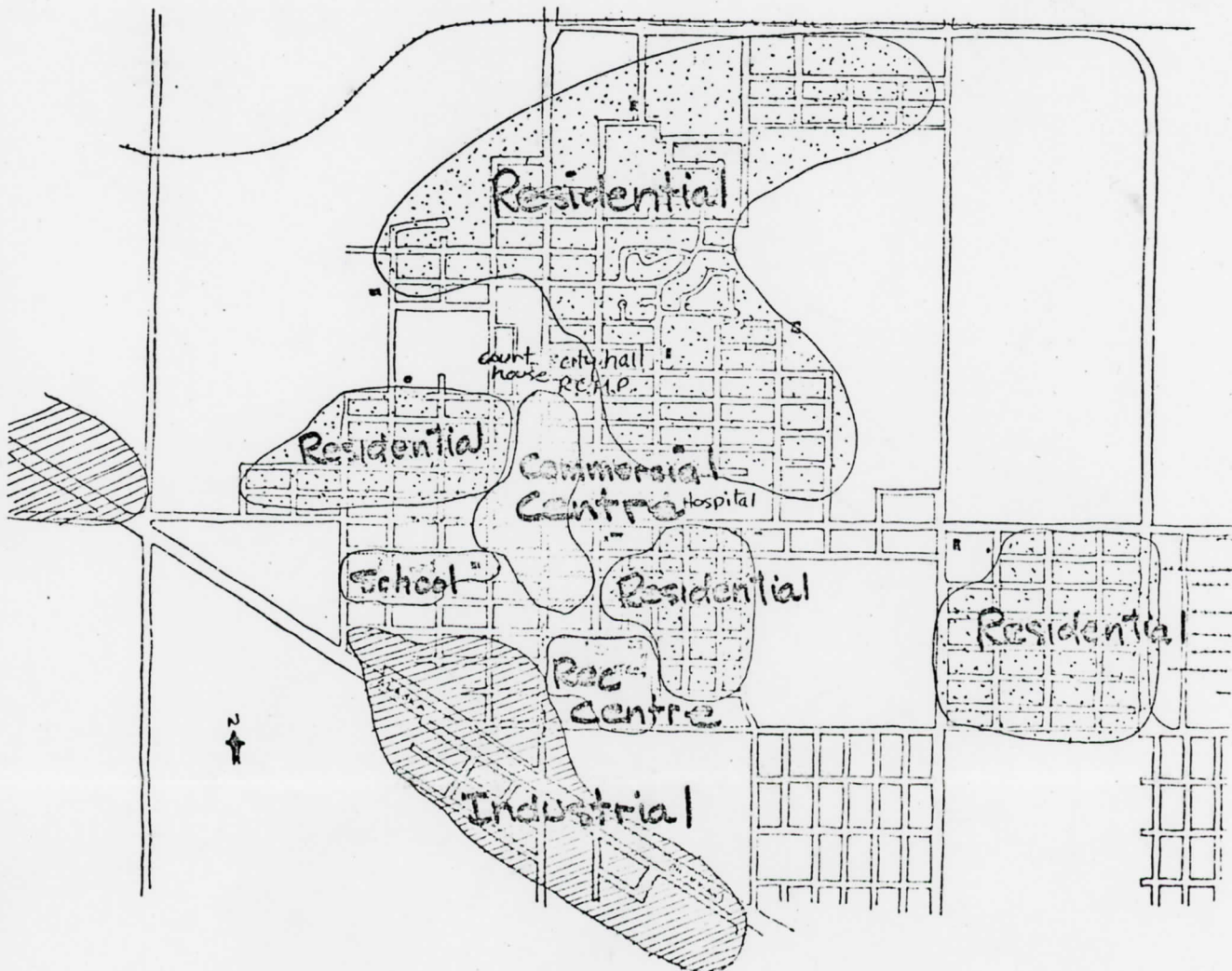
SITE PLANNING  
(DRAFT)

Thompson, Berwick, Pratt & Partners  
1553 Robson Street  
Vancouver, B. C.

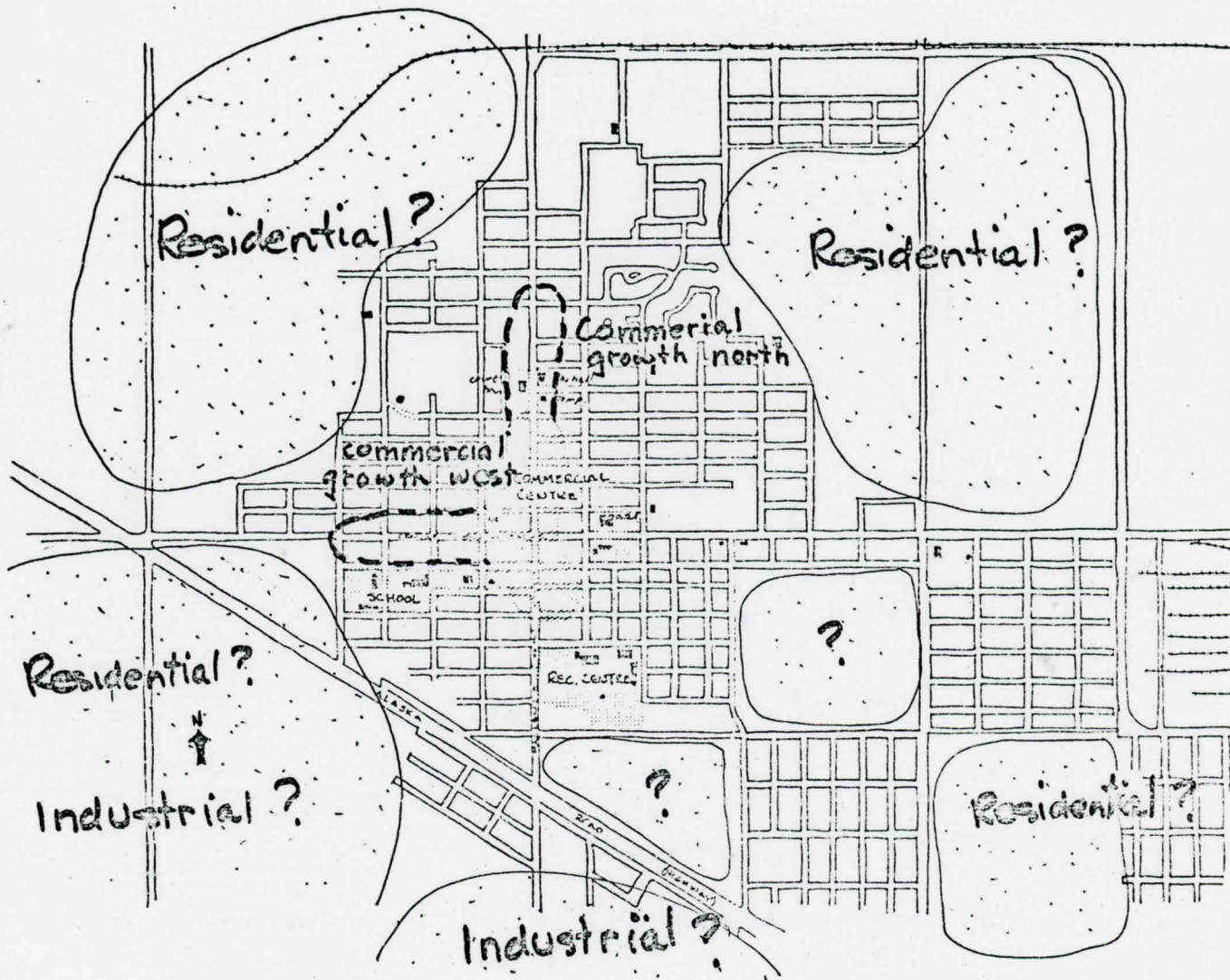
June 3, 1977

## SITE PLANNING CONSIDERATIONS

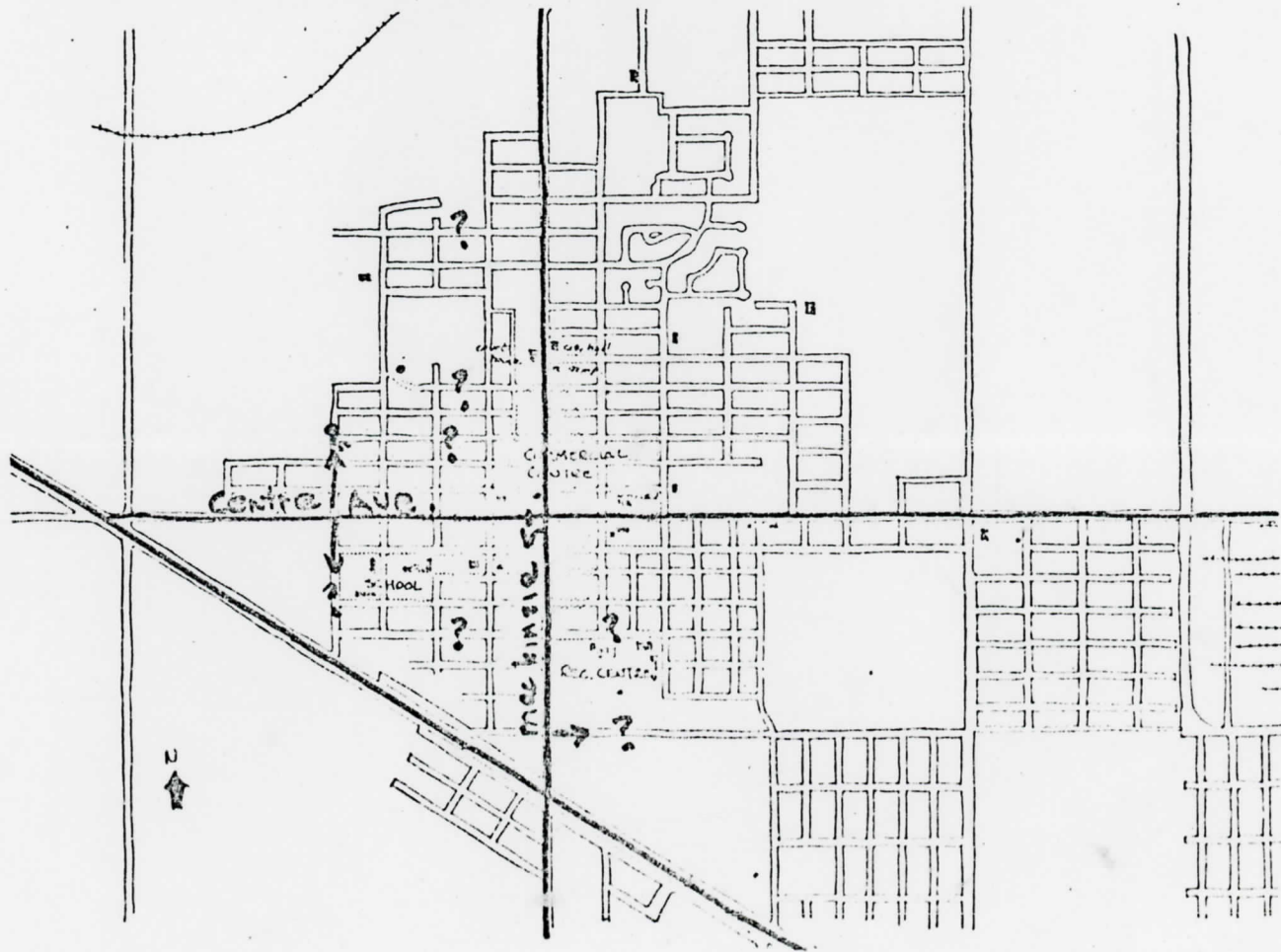
1. Siting of recreational facilities should consider the community services to be performed. It should be remembered that the Community Arts Centre will be a public facility and built with public money for the benefit of the public. It will in "practical terms" be a public enterprise. If it is located in the wrong place, it may render the community a serious disservice.
2. Planning for recreational facilities should not only consider the present needs, but also the future requirements as far as they can be predicted.
3. It should be highly visible and a source of pride for the community.
4. In selecting a site for the Community Arts Centre, the following should be considered:
  - a. existing community patterns



- b. growth and development of the town; residential, commercial, industrial, etc.

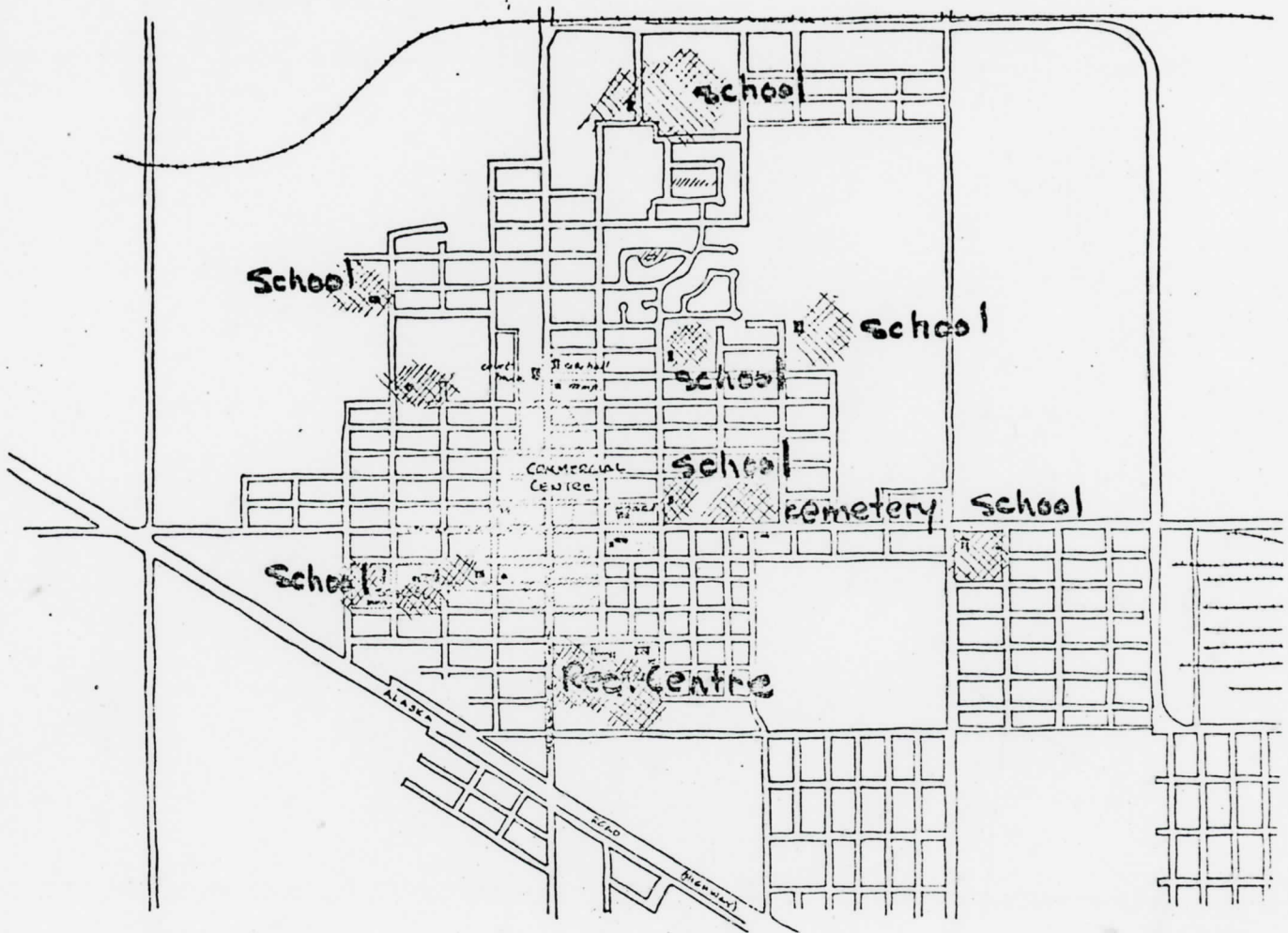


c. traffic patterns; vehicular access and street improvements

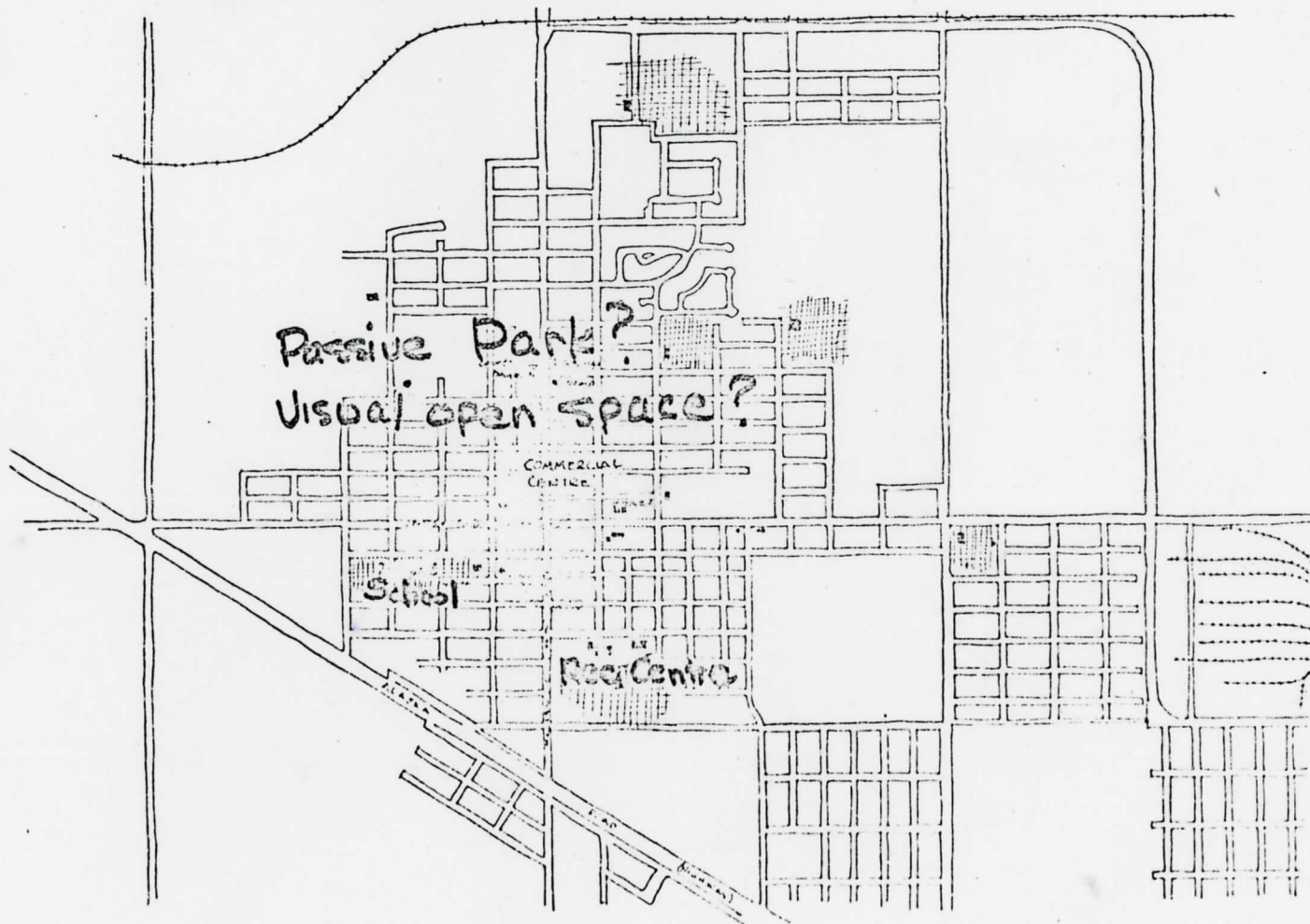




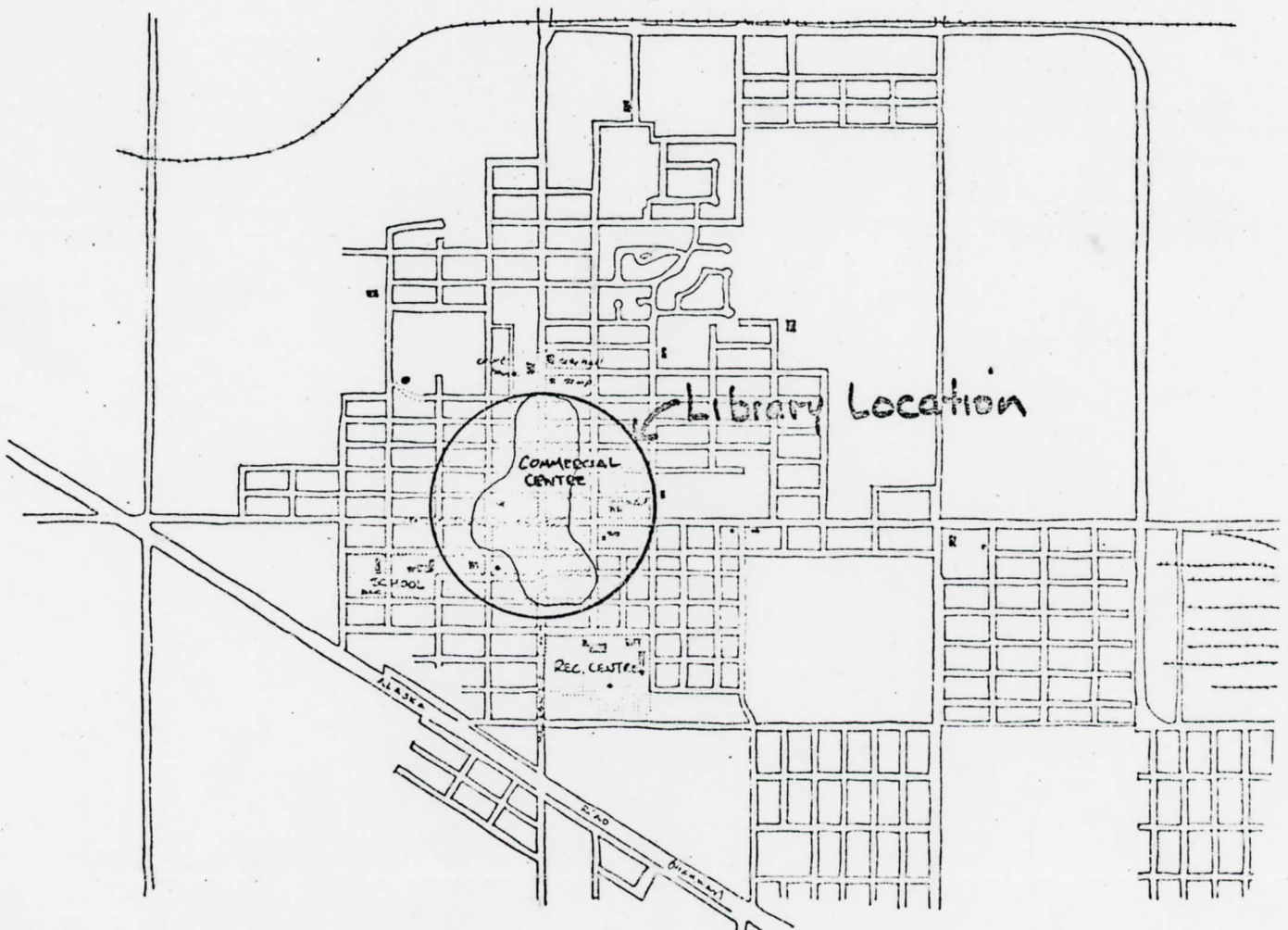
d. existing openspace and its functions



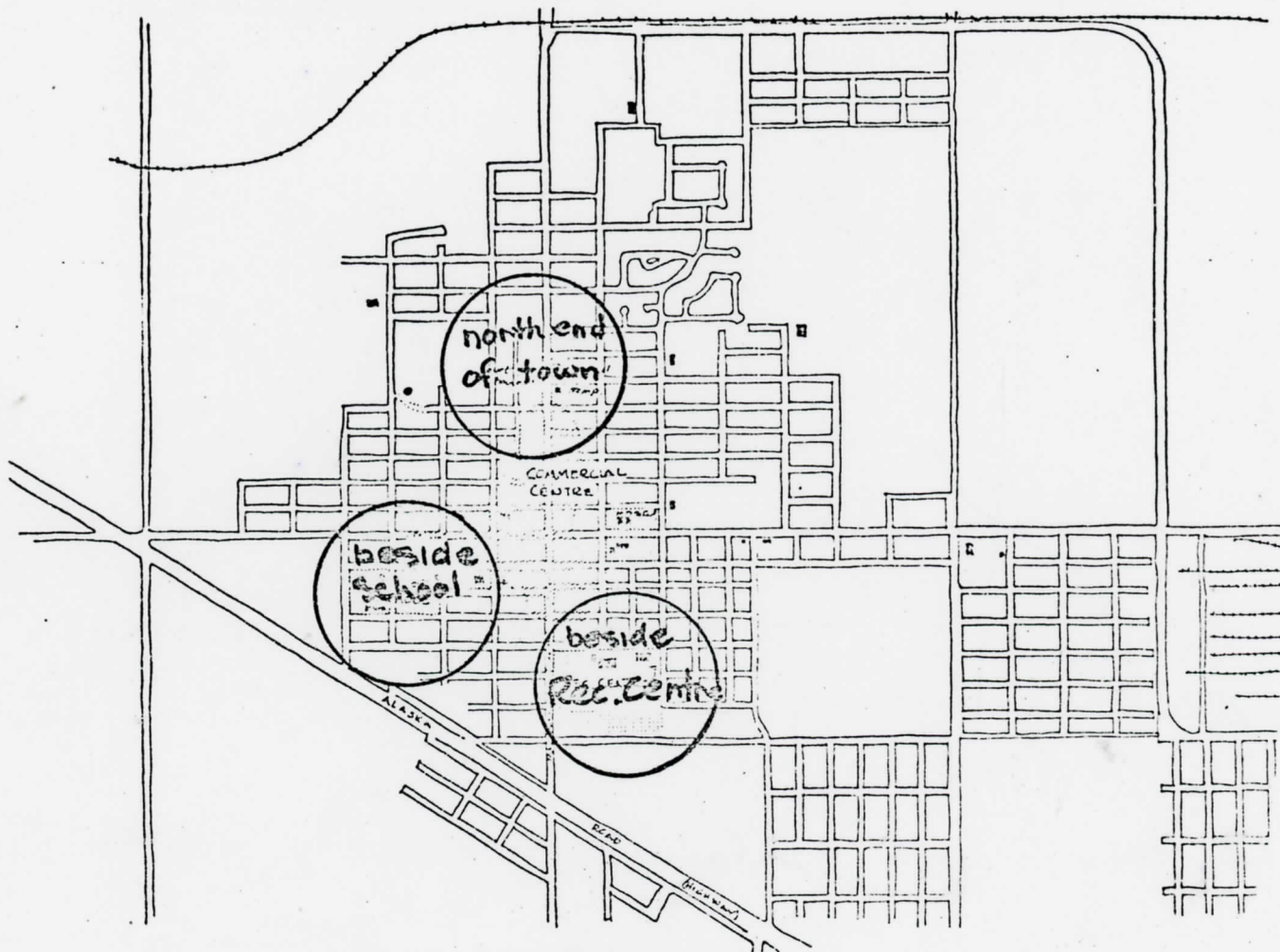
- e. future recreational and open space needs of the community, (before using existing public lands, the future open space needs of the community should be determined to ensure proper planning for the future)



- f. parking requirement
  - g. future expansion requirements
  - h. visual access to the facility
  - i. orientation of the facility; ie. educational or recreational
  - j. cost of land acquisition and possible problems of land assembly.
5. Certain facilities may require special considerations for siting:
- a. Library: the best location will be a busy "downtown" intersection or in a shopping area or centre. The same criteria should be used in choosing the location of the library as those used for any practical, profit-motivated enterprise.

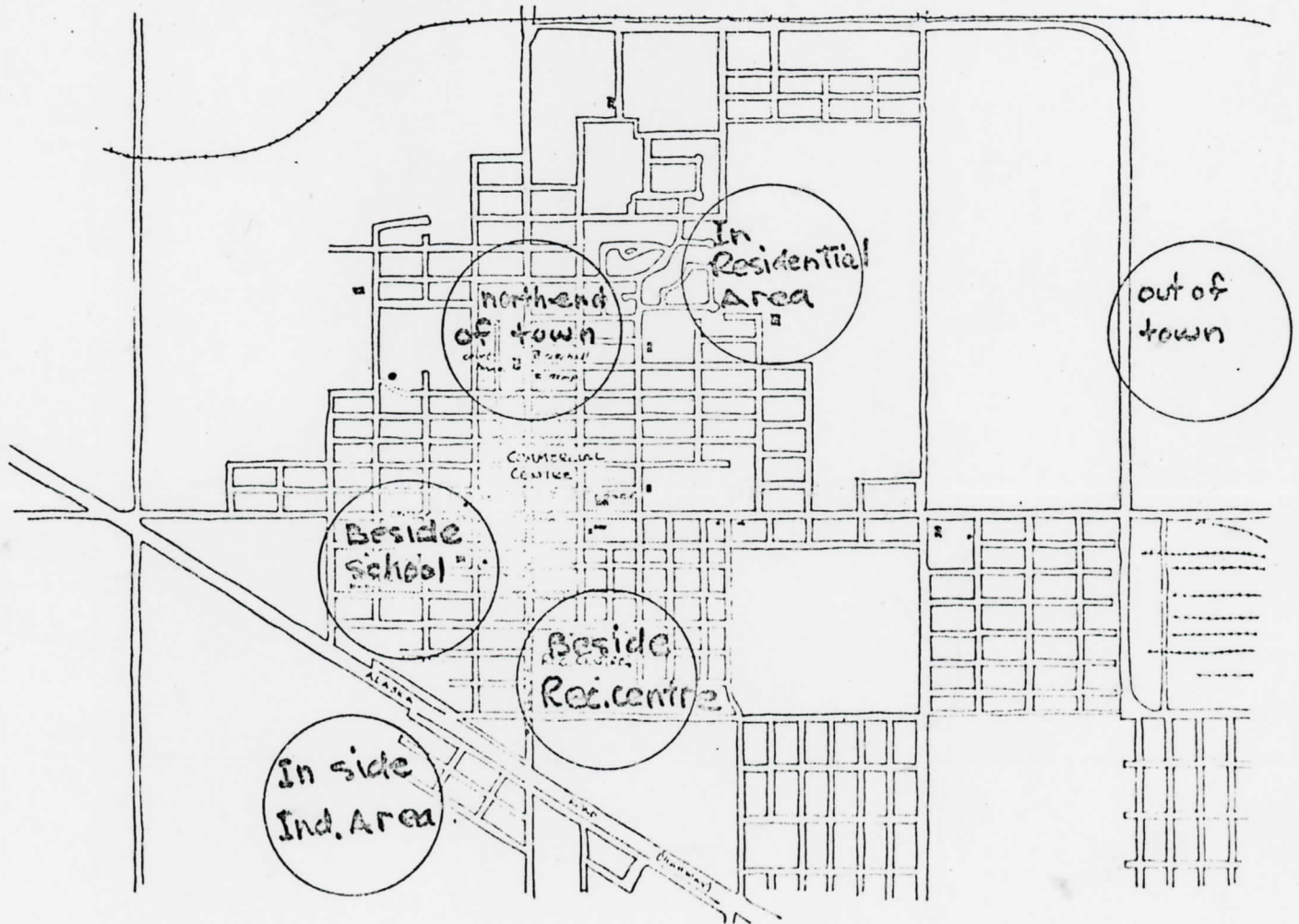


- b. Performing Arts: the best location is where it can be highly visible; preferably in the downtown area. However, user needs may need to be considered.





- c. Arts and Crafts Facilities: the location per se may not be critical, however it should be a place conducive to creativity.



7. Special siting considerations for the Arts Centre may be required from the point of view of the school, college and community groups.

- a. if the Community Arts Facility is to be used for high school programmes it may be best located close to the high school. On the other hand, special school programming may allow separation from the existing school structure.
- b. the College use may require the Community Arts Centre to be close to existing facilities such as the high school or the recreation centre. However, flexibility in college programming may allow alternative site locations.
- c. community groups require proper facilities. The location per se may not be critical.

# 8. Possible Alternative Sites

