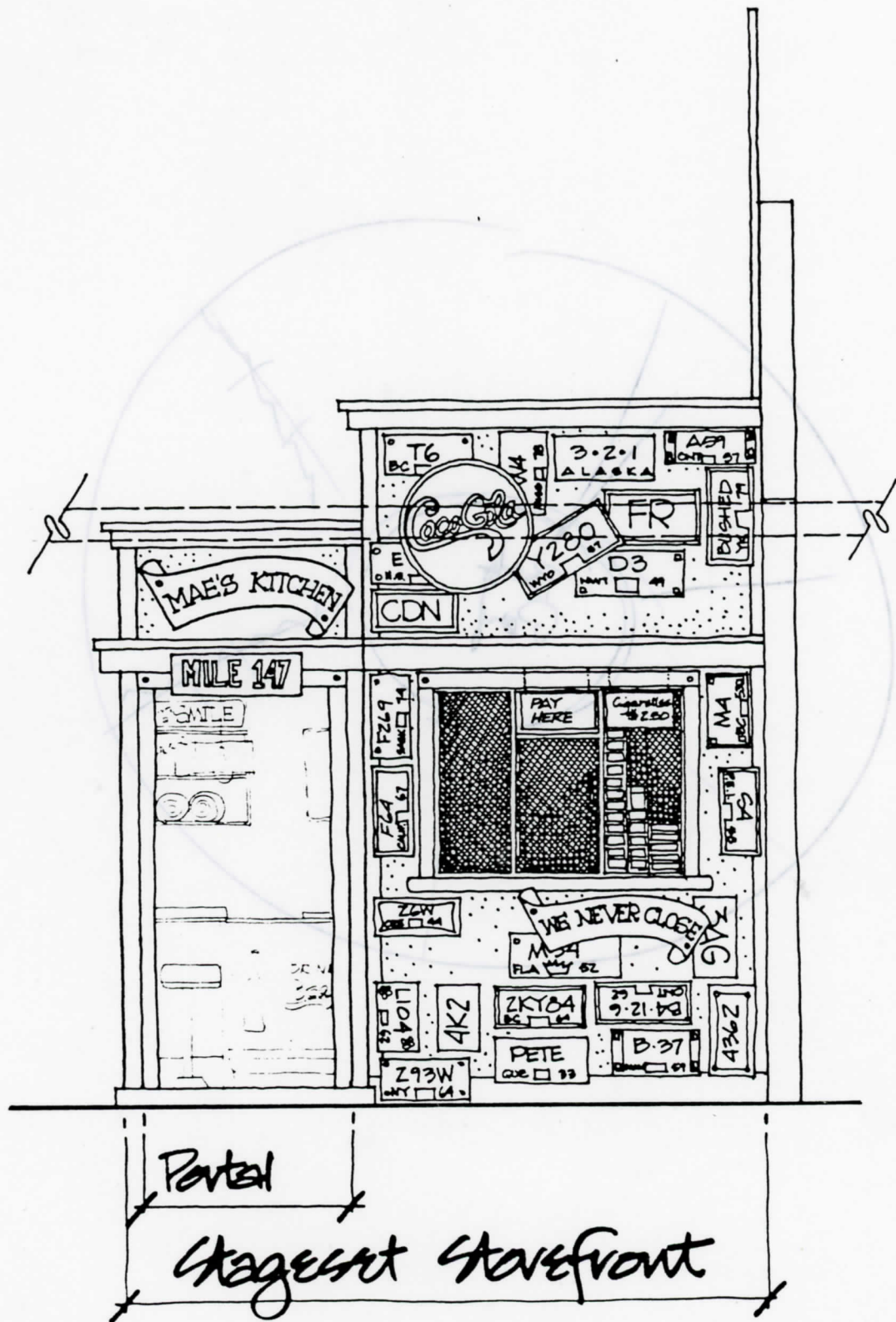
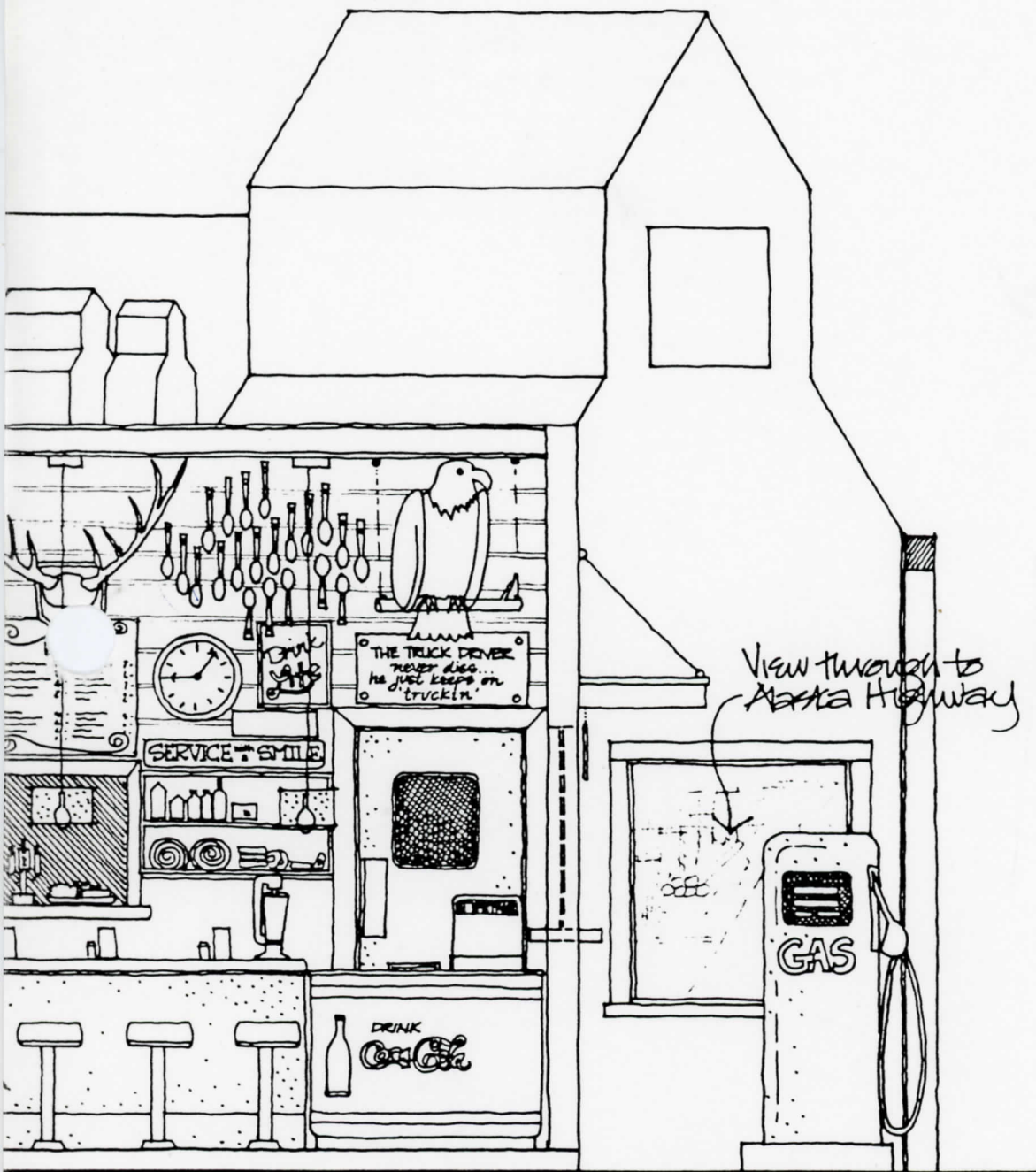


Postcard Video sled Dogs & Musher: 1985

Landscape Wall

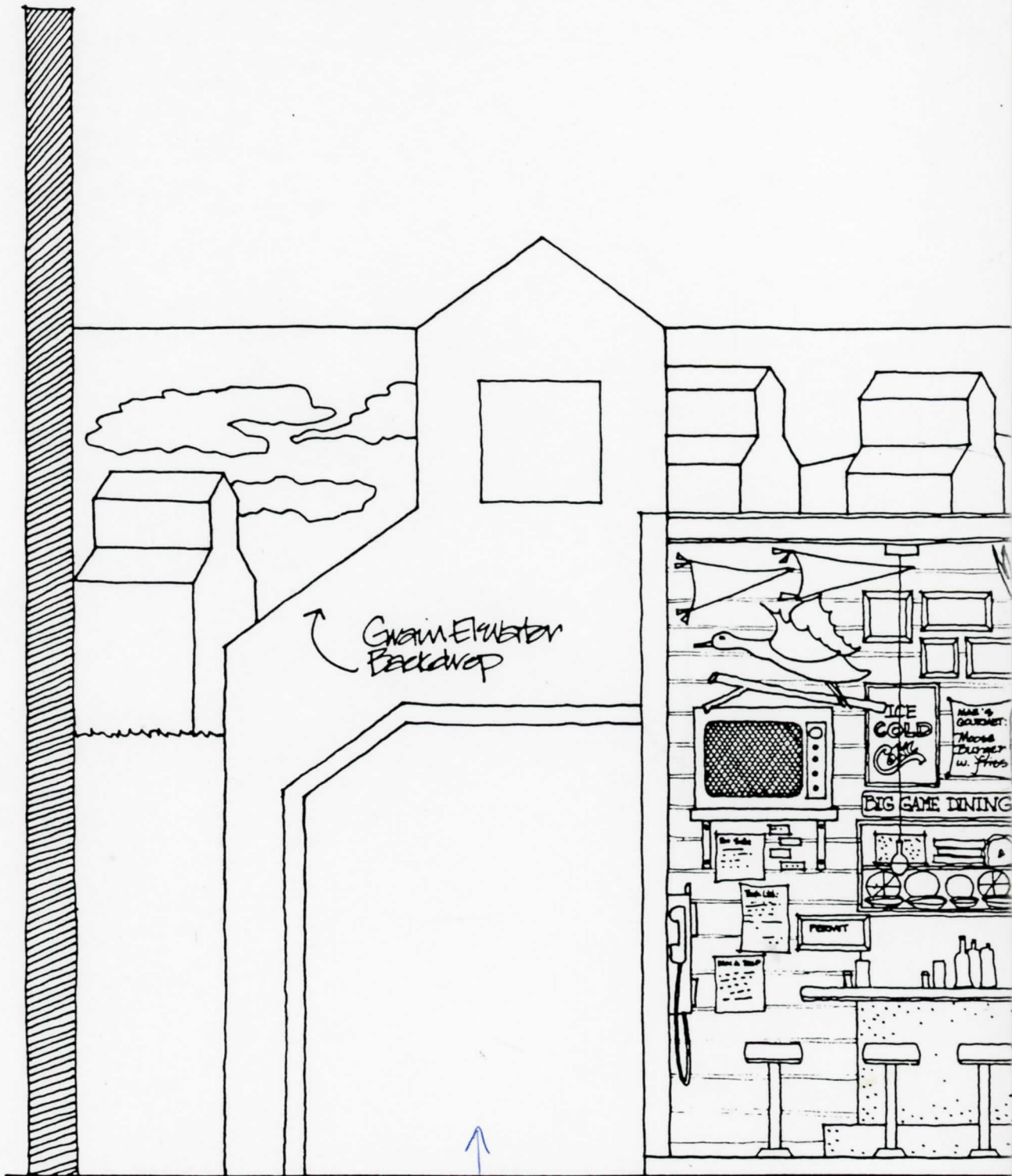




Mae's Truck Stop: Mile 147

geat

Storefront

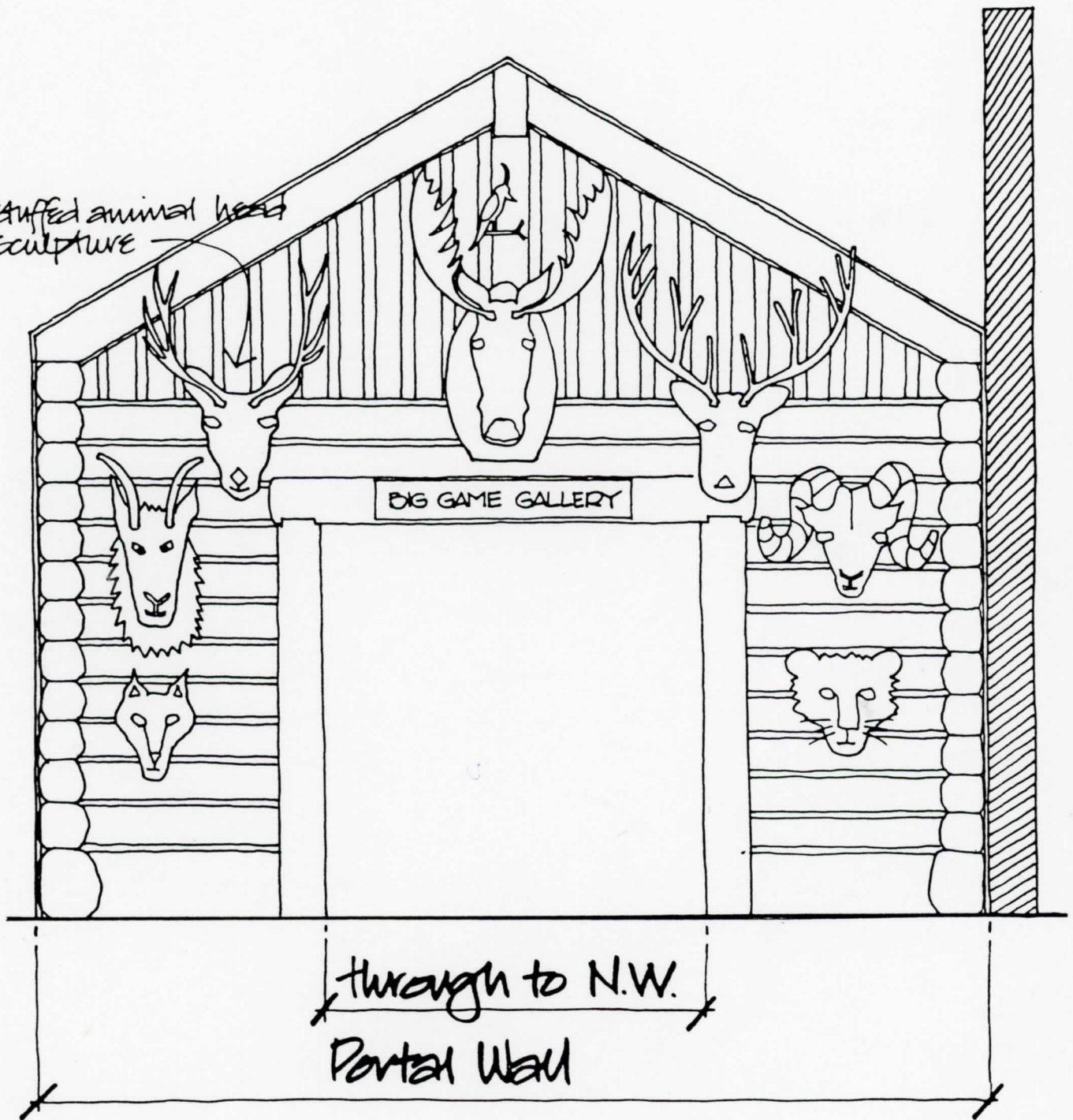


Ving Wall

through to Merchandising

GA

stuffed animal head sculpture



Ivan Strone
SS#2 Site 18 Comp 2
Fort St. John B.C.
V1J 4M7
Telephone (604) 785-2909
March 22, 1985

Mark Osburn
B.C. Pavilion
Suite 103 1290 Homer St.
Vancouver B.C.
V6B 2Y5
Telephone (604) 685-2088

Dear Mark

I welcome the chance to participate in the information you want to set up for this section of B.C. in the Pavilion.

I secured this mile post, by mile post description of the Alaska Highway from our PRAHTA office so I will high light a few points of interest. Also please refer to the distance on the highway as mile posts not meters. (we are a part of Canada but the meters are foriegn).

Starting off. Dawson Creek

It has many interesting sites (1) Mile 0 Post the beginning of the Alaska Highway. Historically Charlie Lake, Mile 52, is where the Alaska Highway began but at the construction of the Alaska Highway Dawson Creek was the end of the rail way, all the materials came by train so Dawson Creek became Mile 0. (2) Library. (3) Rotary swimming pool. (4) 12,000 population. (5) Main industry is farming.

Taylor Flats. Mile 35

(1) Population 1000. (2) Main industry is oil refinery and sawmill.

Fort St. John. Mile 47

(1) Population 14,000. (2) Industries are farming, ranching, oil and gas lumber transportation and municipal airport. Sites to see: (1) The New North Peace Museum maily outlining pioneers in all areas. (2) Our cities emblem a life sized oil derrick, to emphasize that Fort St. John is the Oil and Gas capital of B.C.. (3) In city campgrounds.

Mile 52. Charlie Lake

Large 10 mile long lake, good fishing and two provincial campgrounds.

Mile 54. 18 hole Lake Point Golf and Country Club, a golf course that is second to none.

Mile 54. Junction of highway to Sleepy Hudson Hope, and home of the Bennet Dam. At the time of construction it was the largest earth filled dam in the world. It is the cration of Williston Lake which has 249 miles of shore line.

Mile 143. Pink Mountain

The only stopping place ouside of major centres to have a full hotel. Pink mountain has a pinkish tinge but you have to travel a couple of miles off of the highway to see it.

Mile 147. Mae's Kitchen

No one ever goes by Mae's Kichen without stopping for a home cooked meal. (delicious) Giant home made toast, apple, strawberry, ruhbarb, pies 2 inches deep. Yum Yum.

Mile 195. Truch Mountain

The second highest elevation point of the Alska Highway.

Mile 300. Fort Nelson

(1) Population 6000. All services, and flyin fishing and hunting.

Mile 317. Junction of new highway to Fort Simpson and McKenzie Highway in North West Territories.

Mile 355. Summit of Steamboat Mountain.

It is the highest elevation of the highway. At about mile 350 the mountain looks like a steamboat.

360. Off to the right of the highway you can see a perfect replica of an Indian head on the side of a mountain.

Mile 363. You can see a huge rock balancing on top of a mountain.

Mile 392 to 394. The Racing River.

This river is not very deep, approximately 4 feet. The water is so swift you can not wade into it any deeper than your ankles, because it will sweep you off your feet.

Mile 422. The Toad River and Lodge. Beautiful beautiful small community.

Mile 456 to 463. Muncho Lake.

A deep deep lake and if you can catch them, there are some big, big fish down there.

Mile 496. Liard River Hot Springs.

Alot of elderly people with artheritaical diseases camp here for long periods during the summer and bathe in the waters. They seem to gain relief from their diseases from these waters.

Mile 538. Whirlpool Canyon.

This site was the picture on the back of our five dollar bill until the last change.

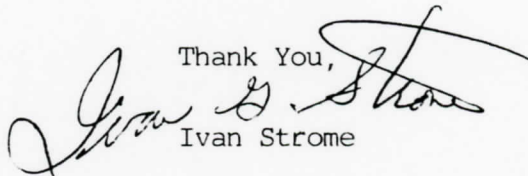
* Mile 596. Iron Creek.

Don't miss the spoon display, 1400 spoons from around the world.

Mark the whole Alaska Highway is a highlight by picking out a few does not do justice to the 1200 miles of highway. I suppose I can describe it better by saying come and see the beauty of North Eastern B.C. and enjoy the lure of the wilderness.

If you still want pictures let me know, it will take a little time because the highway is a long one.

*

Thank You,

Ivan Strome

P.S.

I am also including with this letter a Newspaper clipping about Heritage Festival 86. Which will be held in conjunction with Expo 86.

km 103 (Mile 64)

Rafter 'B' Ranch is located on the right side of the highway and is the first left turn when you head down the road. They rent horses by the hour, day, or weekend at competitive rates and have both English and Western saddles to accomodate the rider. They also run a Guides & Outfitting service for the hunter and fisherman with camping gear, meals and wrangler provided.

km 116.7 (Mile 72.5)

There is an Inn on the right side of the highway. It has a small craft shop, gas pumps, and propane. Their campground is located here as well, with full hookups for the traveller.

THE SHEPHERD'S INN 827-3676
Box 6425, Fort St. John, B.C. V1J 4H8
Sleeping units, home cooked meals, diningroom.
Combination baths, R.V. park, BBQs, sani-station.
C.P. 7 days 20 units 8 trailer spaces

km 117.5 (Mile 73)

Located here is a Texaco service station complete with a restaurant. There is a turn off here to Buick Creek and Beatton River.

km 162.6 (Mile 101)

This small community of Wonowon offers a grocery store, both a Chevron and Esso service stations with complete car and truck repair services.

PINE HILL MOTEL 772-3340
Box 30, Wonowon, B.C. VOC 2N0
Housekeeping and sleeping units with baths and shower. Trailer hookups, showers, propane, ice, winter plugins. C.P. 2 days 9 units 18 sites

km 230 (Mile 143)

You will find the community of Pink Mountain has such amenities to offer as a small grocery store, complete with books, magazines and souvenirs, as well as a service station. This area is excellent for hunting and fishing. You can buy your fishing and hunting licences here. There are several Guides & Outfitting companies here that can arrange hunting and fishing trips into the wilderness. For the hunter, this area provides moose, elk, goat, stone sheep, black bear, grizzly, caribou, wolf, and wolverine. For the fisherman, there are Rainbow Trout, Arctic Grayling and Dolly Varden. They can also arrange for trail rides or photographic trips on any of the many roads and trails to be explored. One of the more spectacular sights you may see will be 'Buffalo' grazing, an almost extinct breed of animal. There is also a post office located here.

STORYLINE : Northeast Peace River

Synopsis: "The Big Country"

Popesku
Peace/Mackay

Historical Context:

Regional Attitudes/Exhibit Themes:

'The world famous Alaska ^{Highway} presents a strong image in this region. It is a land of big people and big projects (ie. dam projects such as the ~~Burnett~~ or Peace, and natural gas and coal such as Ft. St. John and Tumbler Ridge). This area also represents large scale farming on the vast prairie expanses, and big game hunting at its best.

Exhibit Components:

1. Stageset Backdrop:

"The Peace River Prairie" - large scale painted facades of grain elevators near Dawson Creek set against more distant b/w photographic images of the same. The facade of the grain elevator adjacent to the roadstation storefront has a window from which there is a view through to a large truck rolling down the Alaska Highway amidst a cloud of dust.

2. Stageset:

'Mae's Kitchen', an Alaska Highway roadstation. An interior setting of a roadstation, complete

...2. Northeast Peace River

with service counter and stools. Taxidermy, curios and assorted memorabilia (ie. a spoon collection) decorates the interior of the roadstation while highway memorabilia highlights the exterior.

3. Staged Characters:

- Mae, the roadstation proprietress. Mae makes the best apple pies and rhubarb pies on the BC/Alaska Highway, and few truckers miss the ~~fastest~~ colours and camaraderie of this roadside stop. This character would be best represented by a 'real' person who could portray the cultural, historical and contemporary sensibilities of the Alaska Highway.
- Stuffed hunter, complete with red & black checked flannel shirt, gum boots, and hunting cap.
- Stuffed trucker or a stuffed Peace River farmer.

4. Backwall: Frontpiece

Roadsign Posts - a simple roadside marker indicating the direction and distances of far away places; also in place is a replica of the famous 'Mile 0' marker of the Alaska Highway.

Recreation: A musher with sled dogs.

...3. Northeast Peace River

5. Backwall: landscape

An artist-executed mural depicting topography, trails, towns, points of interest in the Northeast. P.

6. Portal Wall:

'The Big Game Gallery' - soft taxidermy typical of the big game area mounted against facade of a log cabin.