

# "Hamlet" here on March 29

Hamlet is to be presented by the North Peace Senior Secondary School Drama Club, who earlier this year staged "Dracula" — on March 29, 30, in the North Peace Auditorium.

Playing the role of Hamlet is Jim Hughson, who incidentally, was also Count Dracula. Jim is playing probably the most famous role in theatre history — a role much wanted by great actors, and even a few actresses. (Sarah Bernhardt played Hamlet). Ken Berean and Mike Hansen play the older, but not necessarily wiser characters of Polonius and Claudius. Ken also plays the comic gravedigger. Joanne Snyder and Bonnie Mertz, play Ophelia and the Queen and each bring to these parts a certain feminine strength.

Doug Posehn plays Hamlet's friend, Horatio, and Randy Poulis is Hamlet's counterpart, Laertes. Dean Fitzgerald plays the ghost of Hamlet's father (a part supposedly played by Shakespeare himself) and he also plays Rosencrantz. Rod Alpaugh and Carmen Flath are guards, and Laurie McCelland and Wendy Wood are maids — of honor.

Director is James Holfman, stage manager is Marg Folkertsma, sound is done by Doug Berean, lights by Blaine Cronin and make-up by Lynn Pettit.

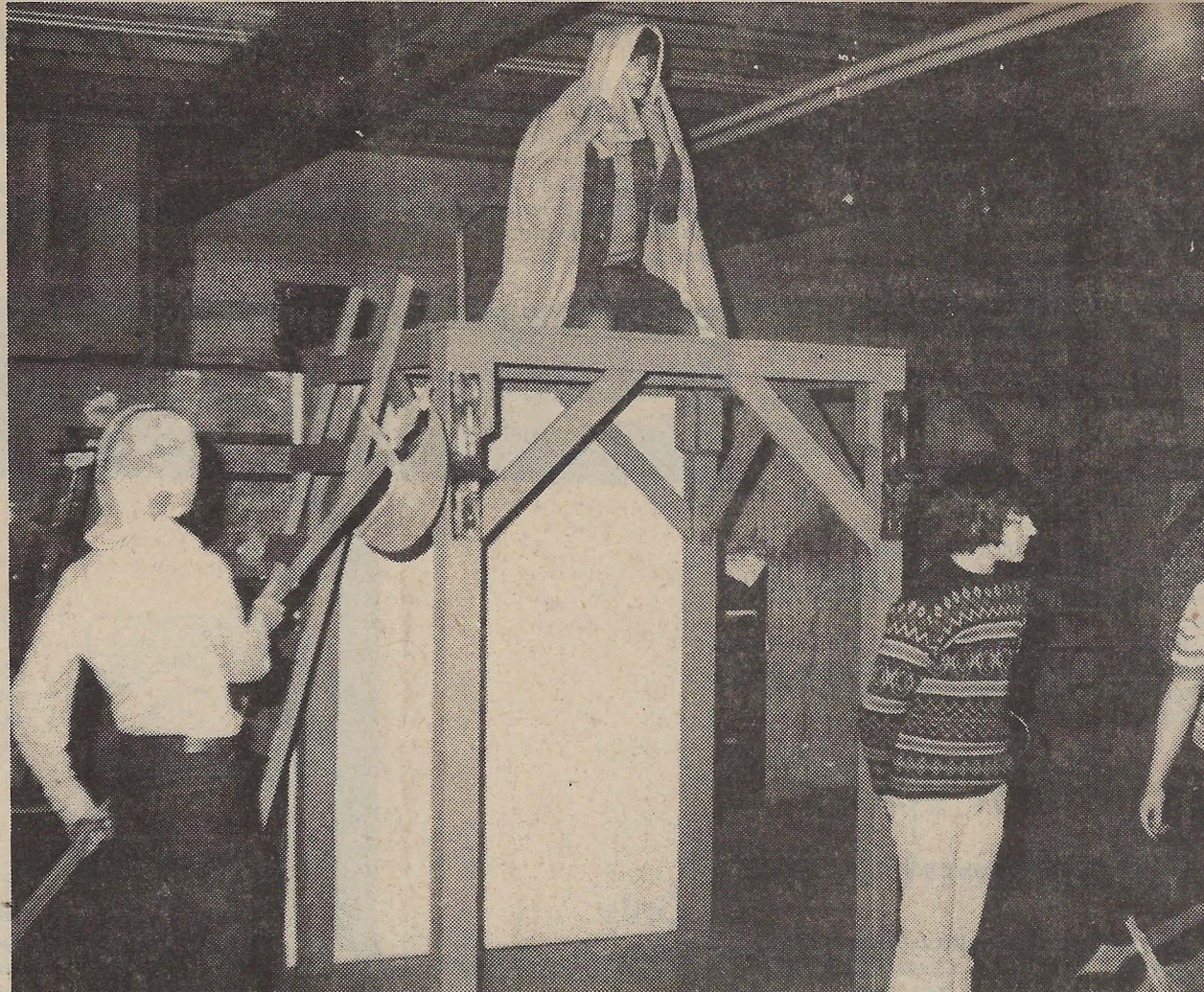
## THE LEGEND OF "HAMLET"

Back around 1600, when "Hamlet" was first performed by Shakespeare's theatrical company, The Lord Chamberlain's Men, audiences were already familiar with the legend of Hamlet. The story, in fact, was by then about 400 years old, dating back through many versions, to an old Danish tale written in the twelfth century.

Also, just before 1600, there had already been stage versions of the Hamlet story. Shakespeare, as he often did, simply took a popular tale, peopled it with his strong, larger-than-life characters, and infused it with his "mighty lines."

## A "REVENGE" PLAY

Audiences not only knew the tale of "Hamlet," but also knew



"WHAT HAS THIS THING appeared again tonight?" Here, the two castle guards, Bernardo and Marcellus, tell Horatio about the ghost they have seen in the tower above. Bernardo is Carmen Flath;

Marcellus, Rod Alpaugh, and Horatio is Doug Fitzgerald. MAR 21, 1961

that "Hamlet" was a "Revenge" play. "Revenge plays were well-known in Shakespeare's time and there was a general pattern they followed. Always there was a terrible crime, usually a murder, which must be avenged, usually by a next-of-kin. Hamlet must avenge his father's murder. Then the avenger must, after surmounting difficulties, discover the murderer, and finally, make an appropriate and grisly destruction of the evildoer. Add to this a ghost, a "mad" scene, and at least several other important deaths and we have the "Revenge" play.

(Continued on Page 6)



"NEITHER A BORROWER nor a lender be . . ." Polonius instructs his son, Laertes, and daughter

Ophelia. Polonius is Ken Randy Poulis and Ophelia